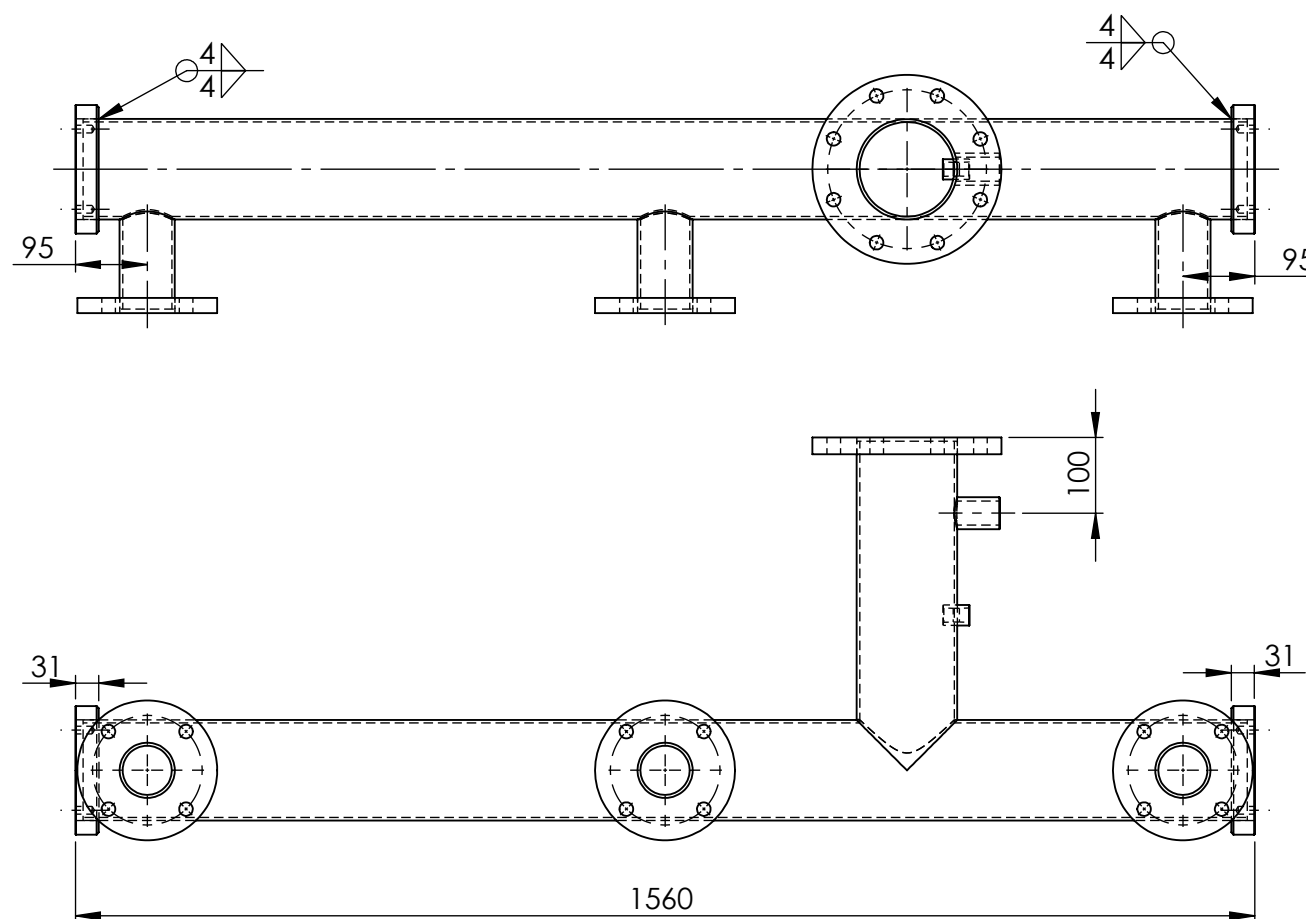
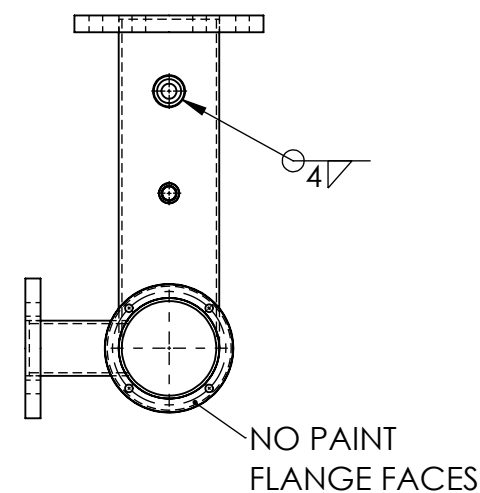
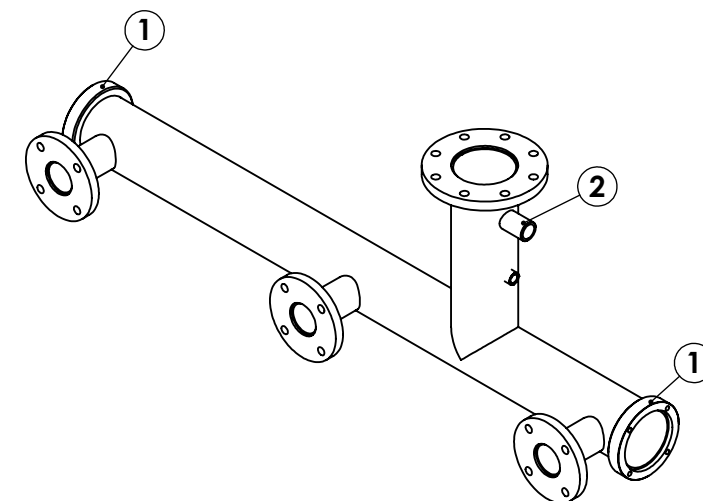


ORIGINAL MANIFOLD



**ALL WELDS** - 4CFW UNLESS NOTED OTHERWISE  
**FINISH** - ENAMEL PAINT TO MATCH EXISTING  
 NO PAINT ON FLANGE FACES or  
 THREAD ON TOE NIPPLE



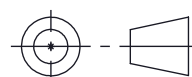
ITEM	DRAWING No	DESCRIPTION	QTY.	MASS (kg)
1	3996-60-25	170 DIA PIPE FLANGE	2	2
2	OEM-32-TN-MS	32NB BLACK STEEL TOE NIPPLE MALE BSP THREAD	1	0

UNLESS OTHERWISE SPECIFIED: TOLERANCES: MACHINE + / - 0.25mm FABRICATION + / - 1.0 mm

THIS DRAWING IS THE PROPERTY OF MECHANICAL ENGINEERING & CAD SERVICES (MECS) Pty Ltd & MUST NOT BE MANUFACTURED FROM, COPIED OR TRANSMITTED TO A THIRD PARTY WITHOUT THE PRIOR APPROVAL FROM MECHANICAL ENGINEERING & CAD SERVICES (MECS) Pty Ltd

**MECS**  
 Mechanical Engineering & CAD Services  
 11 Campbell Place WAGGA NSW 2650  
 Ph: - 0409 985 816  
 Email: nick@mecs-services.com.au

DIMENSIONS IN MILLIMETRES



THIRD ANGLE PROJECTION

CLIENT

**RODDY ENGINEERING**

14 Waratah St TUMUT NSW 2720  
 Ph: - 02 6947 4039  
 Email: roddyeng.com.au

TITLE:

**GENERATOR OIL COOLING MANIFOLD UPGRADE**

DWG NO. 3996-60-10

REV

A3

DRAWN N DE BRUYN

DATE 16/02/2026

SCALE:1:10

SHEET 1 OF 1