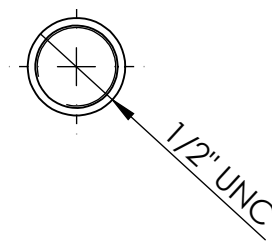
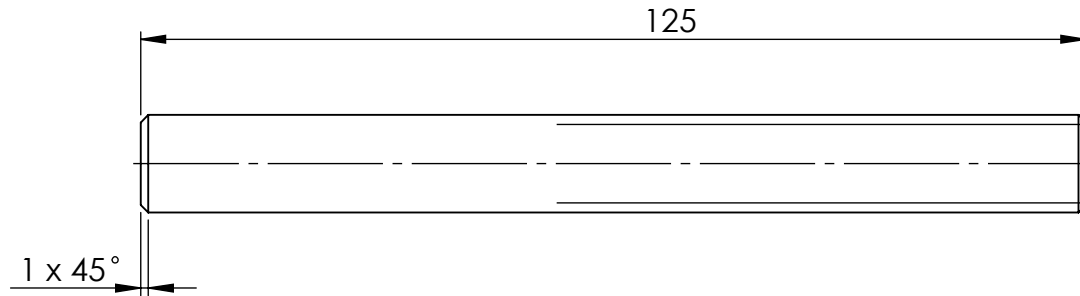
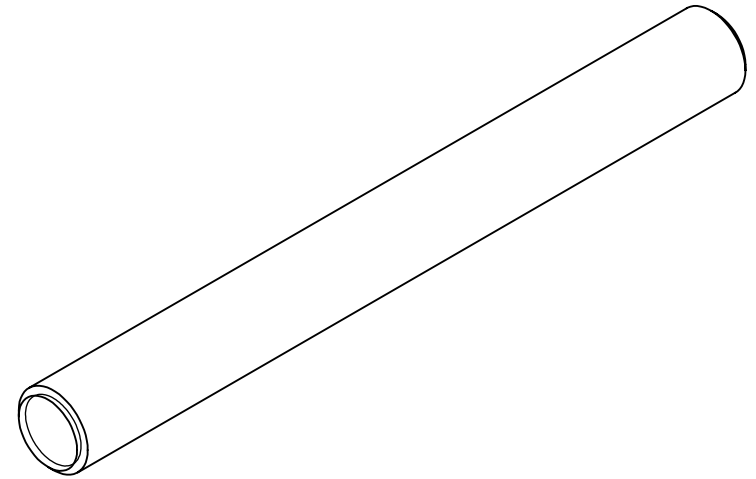


DIMENSIONS IN MILLIMETRES



MATERIAL:- 304 STAINLESS STEEL

TITLE: 1/2" UNC ALL THREAD 304 S/S
x 5" LONG

UNLESS OTHERWISE SPECIFIED: TOLERANCES: MACHINE +/- 0.25mm FABRICATION +/- 1.0 mm

THIS DRAWING IS THE PROPERTY OF MECHANICAL ENGINEERING & CAD SERVICES (MECS) Pty Ltd & MUST NOT BE MANUFACTURED FROM, COPIED OR TRANSMITTED TO A THIRD PARTY WITHOUT THE PRIOR APPROVAL FROM MECHANICAL ENGINEERING & CAD SERVICES (MECS) Pty Ltd



THIRD ANGLE PROJECTION

WEIGHT: 0 Kg

MECS
Mechanical Engineering & CAD Services
11 Campbell Place WAGGA NSW 2650
Ph: - 0409 985 816
Email: nick@mecservices.com.au

DWG NO. 1-2_UNC-AT-125 REV

A4

DRAWN N DE BRUYN DATE 15/11/2024 SCALE:1:1

SHEET 1 OF 1