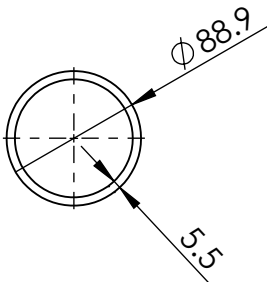
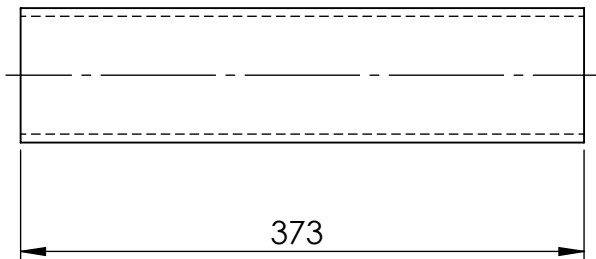
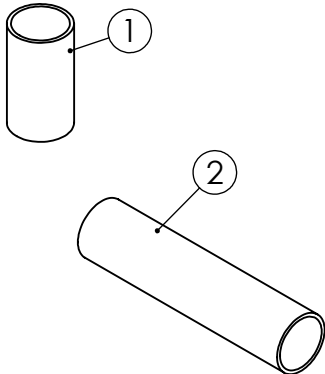
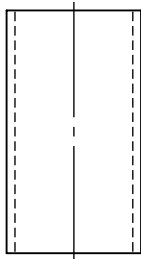
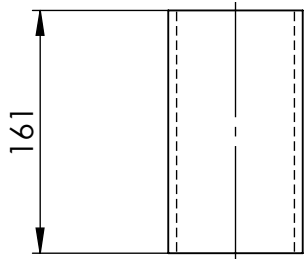


ITEM NO.	DESCRIPTION	LENGTH	MATERIAL	MASS (kg)
1	89x5.5 CHS	161	316L STAINLESS STEEL	2
2	89x5.5 CHS	373	316L STAINLESS STEEL	4



MATERIAL:- 316L STAINLESS STEEL

UNLESS OTHERWISE SPECIFIED: TOLERANCES: MACHINE + / - 0.25mm FABRICATION + / - 1.0 mm

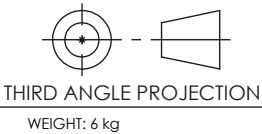
DIMENSIONS IN MILLIMETRES

CLIENT

TITLE:

THIS DRAWING IS THE PROPERTY OF MECHANICAL ENGINEERING & CAD SERVICES (MECS) Pty Ltd & MUST NOT BE MANUFACTURED FROM, COPIED OR TRANSMITTED TO A THIRD PARTY WITHOUT THE PRIOR APPROVAL FROM MECHANICAL ENGINEERING & CAD SERVICES (MECS) Pty Ltd

MECS
Mechanical Engineering & CAD Services
 11 Campbell Place WAGGA NSW 2650
 Ph: - 0409 985 816
 Email: nick@mecs-services.com.au



RODDY ENGINEERING
 14 Waratah St TUMUT NSW 2720
 Ph: - 02 6947 4039
 Email: roddyeng.com.au

80NB SHED 40 PIPE 316 S/S

DWG NO.	11-2843-1-1	REV	A4
DRAWN	N DE BRUYN	DATE	17/04/2024
SCALE	1:5	SHEET	1 OF 1