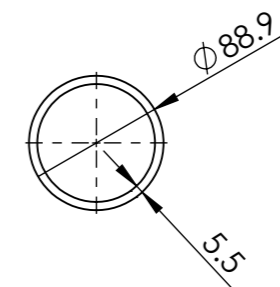
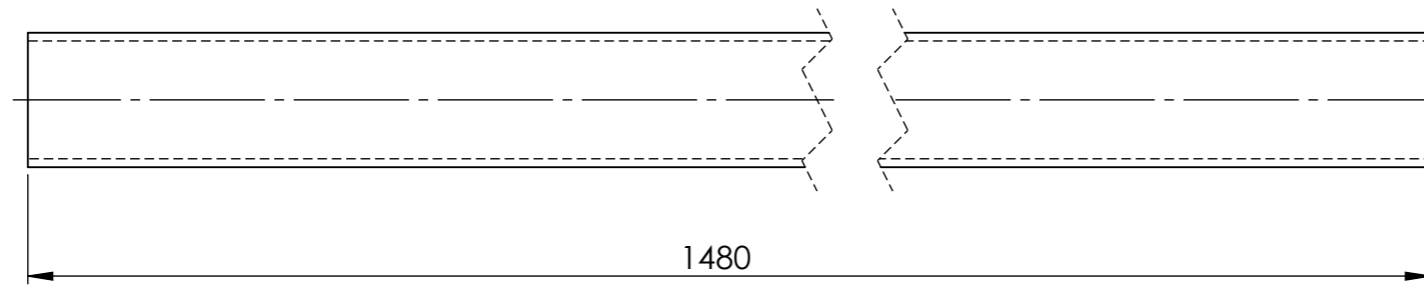
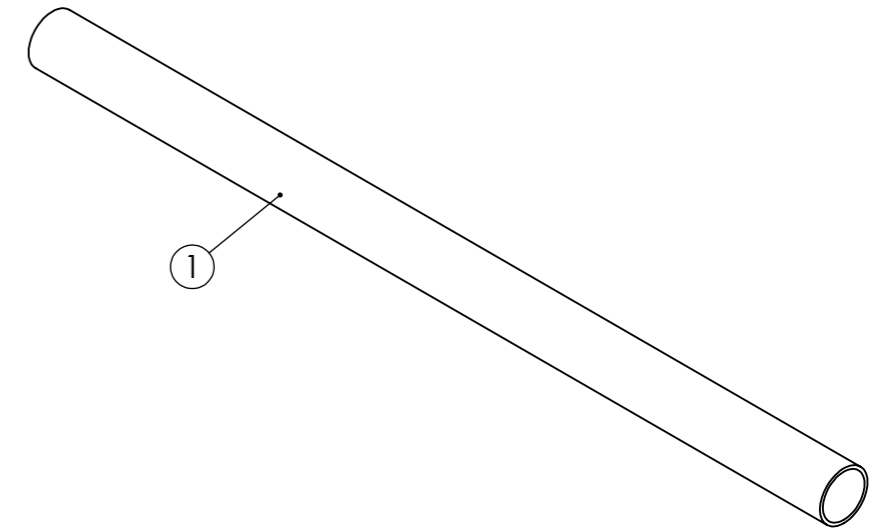


DIMENSIONS IN MILLIMETRES

ITEM NO.	DESCRIPTION	LENGTH	MATERIAL	MASS (kg)
1	89x5.5 CHS	1480	316L STAINLESS STEEL	17



**MATERIAL:- 316L STAINLESS STEEL**

UNLESS OTHERWISE SPECIFIED: TOLERANCES: MACHINE + / - 0.25mm FABRICATION + / - 1.0 mm

DIMENSIONS IN MILLIMETRES

CLIENT



14 Waratah St TUMUT NSW 2720  
Ph: - 02 6947 4039  
Email: roddyeng.com.au

TITLE:

80NB SHED 40 PIPE 316 S/S

THIS DRAWING IS THE PROPERTY OF MECHANICAL ENGINEERING & CAD SERVICES (MECS) Pty Ltd & MUST NOT BE MANUFACTURED FROM, COPIED OR TRANSMITTED TO A THIRD PARTY WITHOUT THE PRIOR APPROVAL FROM MECHANICAL ENGINEERING & CAD SERVICES (MECS) Pty Ltd

**MECS**  
Mechanical Engineering & CAD Services  
11 Campbell Place WAGGA NSW 2650  
Ph: - 0409 985 816  
Email: nick@mecs-services.com.au



THIRD ANGLE PROJECTION

DWG NO. 12-2843-A-1

REV A3

DRAWN N DE BRUYN DATE 18/03/2024 SCALE:1:5 SHEET 1 OF 1