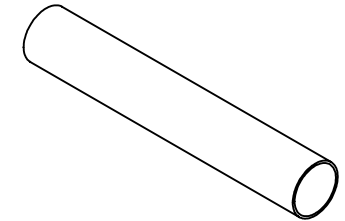
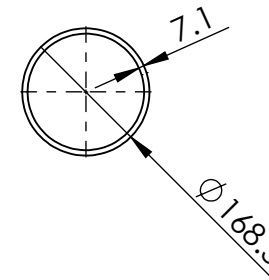
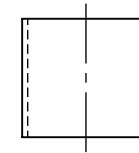
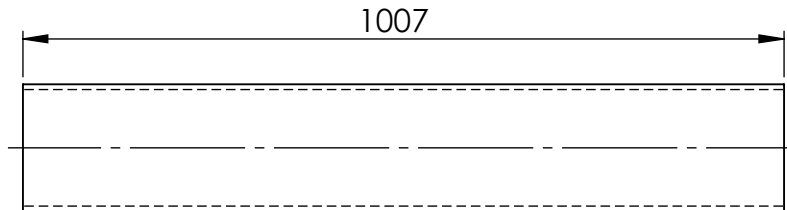
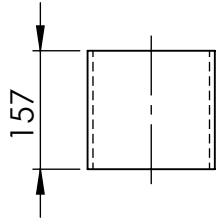


ITEM NO.	DESCRIPTION	LENGTH	Material	MASS (kg)
1	168.30x7.1 CHS	156.5	316L STAINLESS STEEL	4.50
2	168.30x7.1 CHS	1006.5	316L STAINLESS STEEL	28.95



MATERIAL:- 316L STAINLESS STEEL

UNLESS OTHERWISE SPECIFIED: TOLERANCES: MACHINE + / - 0.25mm FABRICATION + / - 1.0 mm

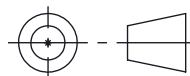
DIMENSIONS IN MILLIMETRES

CLIENT

TITLE:

THIS DRAWING IS THE PROPERTY OF MECHANICAL ENGINEERING & CAD SERVICES (MECS) Pty Ltd & MUST NOT BE MANUFACTURED FROM, COPIED OR TRANSMITTED TO A THIRD PARTY WITHOUT THE PRIOR APPROVAL FROM MECHANICAL ENGINEERING & CAD SERVICES (MECS) Pty Ltd

MECS
Mechanical Engineering & CAD Services
 11 Campbell Place WAGGA NSW 2650
 Ph: - 0409 985 816
 Email: nick@mecservices.com.au



THIRD ANGLE PROJECTION

WEIGHT: 33.45 kg

RODDY
ENGINEERING

14 Waratah St TUMUT NSW 2720
 Ph: - 02 6947 4039
 Email: roddyeng.com.au

150NB PIPE SHED 40 316L S/S

DWG NO. 13-2901-1-1

A4

DRAWN N DE BRUYN DATE 22/09/2025 SCALE:1:10 SHEET 1 OF 1