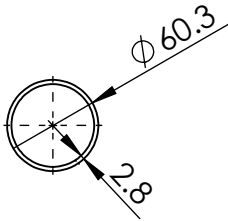
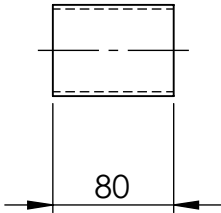


ITEM NO.	DESCRIPTION	LENGTH	MATERIAL	MASS (kg)
1	60x2.8 CHS	80	316L STAINLESS STEEL	0.3



**MATERIAL:- 316L STAINLESS STEEL**

UNLESS OTHERWISE SPECIFIED: TOLERANCES: MACHINE + / - 0.25mm FABRICATION + / - 1.0 mm

DIMENSIONS IN MILLIMETRES



CLIENT  
14 Waratah St TUMUT NSW 2720  
Ph: - 02 6947 4039  
Email: roddyeng.com.au

TITLE:  
**50NB SHED 10 PIPE 316L S/S**

THIS DRAWING IS THE PROPERTY OF MECHANICAL ENGINEERING & CAD SERVICES (MECS) Pty Ltd & MUST NOT BE MANUFACTURED FROM, COPIED OR TRANSMITTED TO A THIRD PARTY WITHOUT THE PRIOR APPROVAL FROM MECHANICAL ENGINEERING & CAD SERVICES (MECS) Pty Ltd

**MECS**  
**Mechanical Engineering & CAD Services**  
11 Campbell Place WAGGA NSW 2650  
Ph: - 0409 985 816  
Email: nick@mecservices.com.au

THIRD ANGLE PROJECTION  
WEIGHT: 0.3 kg

DWG NO.	13-2906-1-1	REV	A4
DRAWN	N DE BRUYN	DATE	8/01/2026
SCALE	1:5	SHEET	1 OF 1