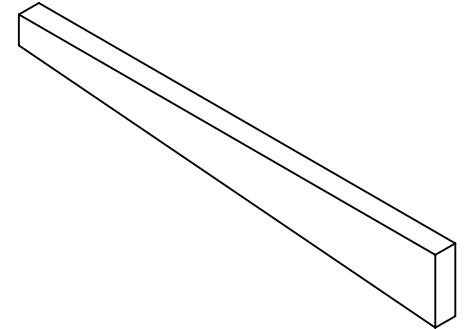
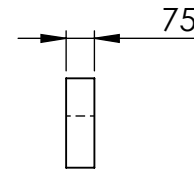
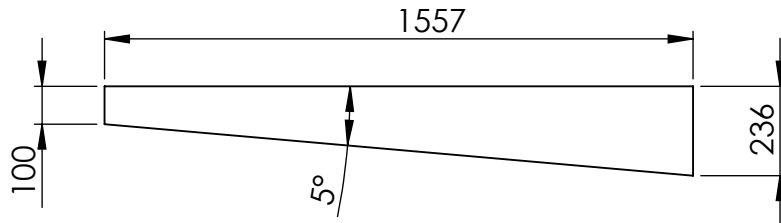


ITEM NO.	Description	LENGTH	MATERIAL	MASS (kg)
1	XFLAM FLAT PROFILE PANEL 75 Thk	1557	XFLAM	5.10



MATERIAL:- XFLAM

UNLESS OTHERWISE SPECIFIED: TOLERANCES: MACHINE + / - 0.25mm FABRICATION + / - 1.0 mm

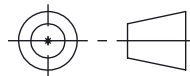
DIMENSIONS IN MILLIMETRES

CLIENT

TITLE:

THIS DRAWING IS THE PROPERTY OF MECHANICAL ENGINEERING & CAD SERVICES (MECS) Pty Ltd & MUST NOT BE MANUFACTURED FROM, COPIED OR TRANSMITTED TO A THIRD PARTY WITHOUT THE PRIOR APPROVAL FROM MECHANICAL ENGINEERING & CAD SERVICES (MECS) Pty Ltd

MECS
Mechanical Engineering & CAD Services
 11 Campbell Place WAGGA NSW 2650
 Ph: - 0409 985 816
 Email: nick@mecservices.com.au



THIRD ANGLE PROJECTION

WEIGHT: 5.10 kg

RODDY
ENGINEERING

14 Waratah St TUMUT NSW 2720
 Ph: - 02 6947 4039
 Email: roddyeng.com.au

XFLAM FLAT PANEL

DWG NO. **3947-50-15**

A4

DRAWN N DE BRUYN DATE 24/04/2025 SCALE:1:20 SHEET 1 OF 1