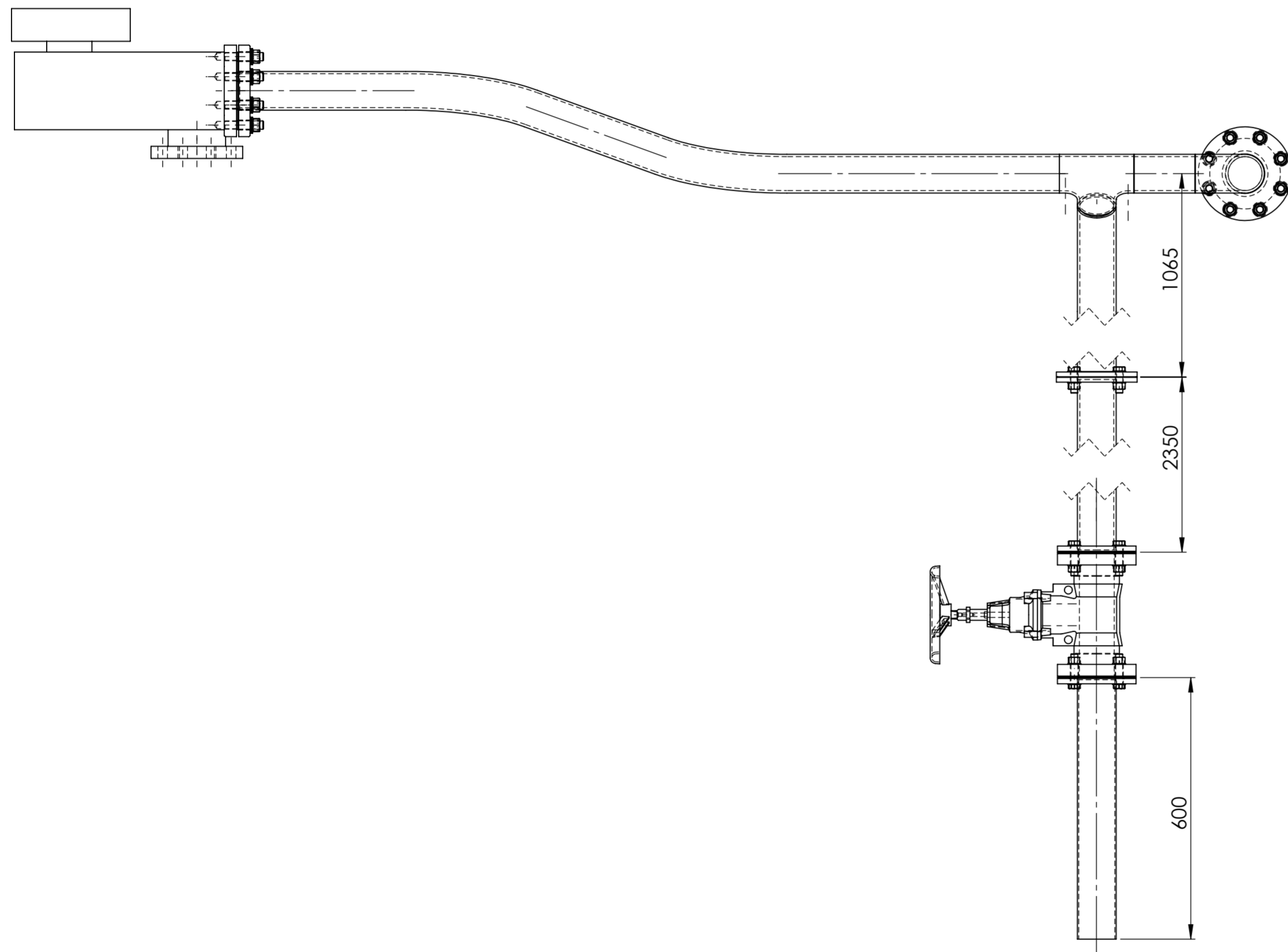
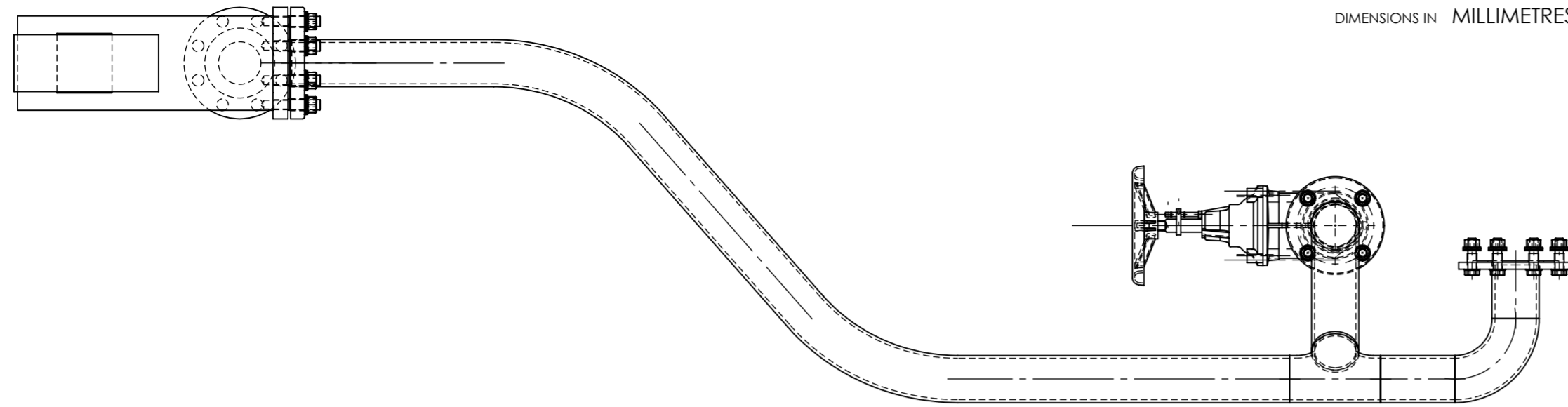


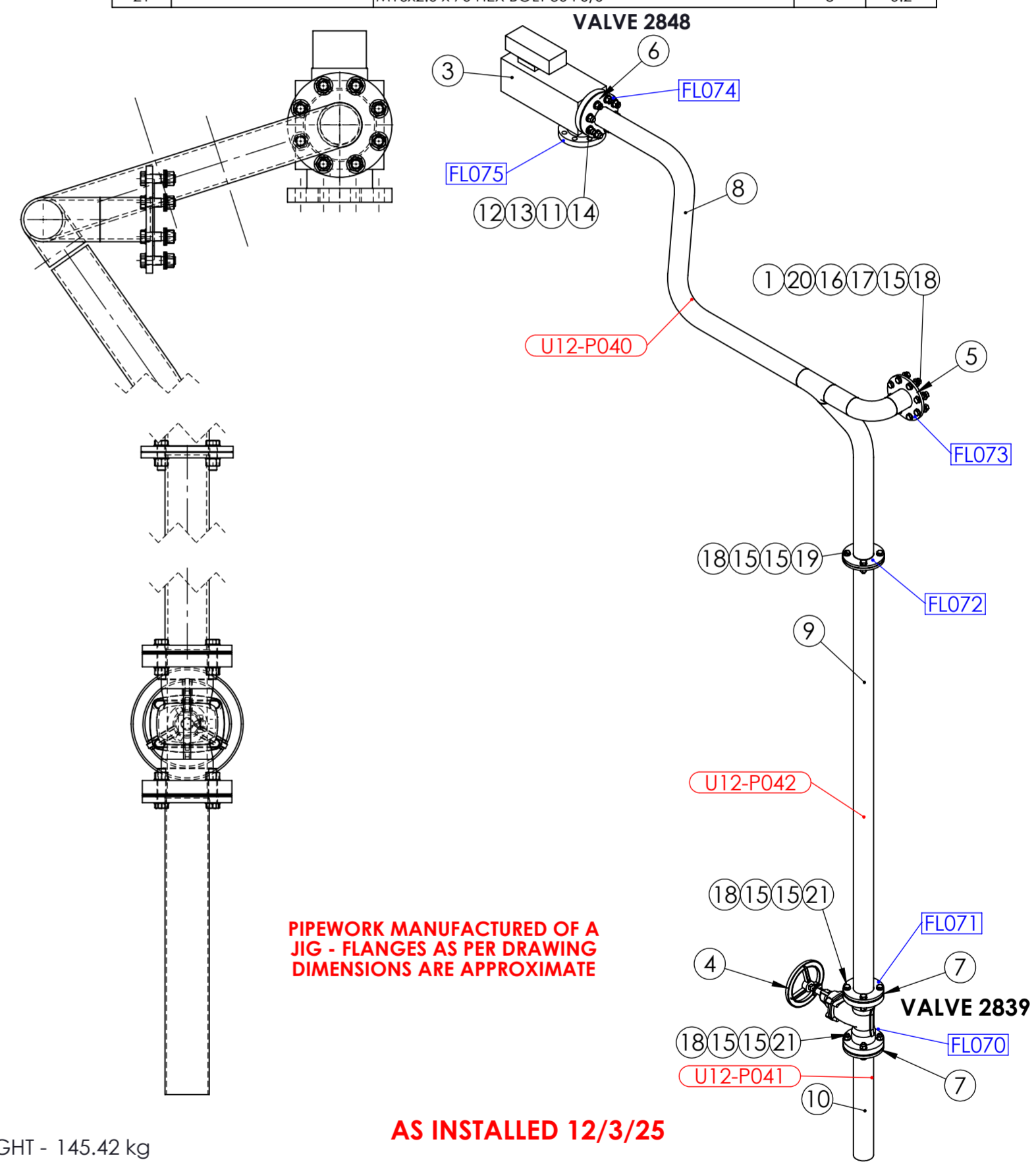
DIMENSIONS IN MILLIMETRES



UNIT 12 VALVE 2839 PIPE ASSEMBLY WEIGHT - 145.42 kg

ITEM	DRAWING No	DESCRIPTION	QTY.	MASS (kg)
1	OEM-MY-16x28	16 DIA MYLAR INSULATION SLEEVE 28 LONG	8	0.00
2	OEM-MY-3_4x28	3/4" DIA MYLAR INSULATION SLEEVE 28 LONG	8	0.00
3	OEM-M2-MP-865	3" WATER PRESSURE NEEDLE RELIEF VALVE	1	19.72
4	OEM-2839-SHL	80NB VALVE 2839	1	29.35
5	OEM-100NB-E-3	100NB TABLE E 3.0mm C-4430 GASKET	1	0
6	OEM-80NB-JIS30K-3	80NB JIS30K 3.0mm C-4430 GASKET	1	0.1
7	OEM-80NB-JIS5K-15	80NB JIS5K 1.5mm C-4400 GASKET	3	0.1
8	12-2839-A-2	UNIT 12 VALVE 2839 UPSTREAM PIPE 2	1	53.49
9	12-2839-A-1	UNIT 12 VALVE 2839 UPSTREAM PIPE 1	1	30.49
10	12-2839-1	UNIT 12 VALVE 2839-1 DOWN STREAM PIPE	1	5.66
11	3-4 UNC-AT-90	3/4" UNC ALL THREAD GRADE 8- 90 LONG	8	0.20
12		3/4" G10 EXPOY FLAT WASHER	8	
13		3/4" HIGH TENSILE FLAT WASHER	8	
14		3/4" UNC HEX NUT ZINC PLATED	8	0.1
15		M16 FLAT WASHER 304 S/S (30x17.5x1.5)	32	0.01
16		M16 G10 EXPOY FLAT WASHER	8	0.02
17		M16 THICK FLAT WASHER 304 S/S (30x17.5x3)	8	0.02
18		M16x2.0 HEX NUT 304 S/S	20	0.06
19		M16x2.0 x 50 HEX BOLT 304 S/S	4	0.1
20		M16x2.0 x 60 HEX BOLT 304 S/S	8	0.1
21		M16x2.0 x 70 HEX BOLT 304 S/S	8	0.2

RED EYE QR CODE AREA



PIPEWORK MANUFACTURED OF A JIG - FLANGES AS PER DRAWING DIMENSIONS ARE APPROXIMATE

AS INSTALLED 12/3/25

REV	NAME & DATE	DESCRIPTION	UNLESS OTHERWISE SPECIFIED: TOLERANCES: MACHINE + / - 0.25mm FABRICATION + / - 1.0 mm	DRAWN N DE BRUYN 17/04/2024	DRAWING CHECKED	
			THIS DRG SUPPLIED BY 14 Waratah St, TUMUT NSW 2720 Ph: 02 6947 4039	DESIGNED	DESIGN CHECKED	
			DRAWING No. J003435-44	SCALE 1:10 WORK ORDER No	APPROVED	
				SECTION No/KKS	A2 SHEET SIZE	SMA-DRG-NO
						SHEET 1 OF 1