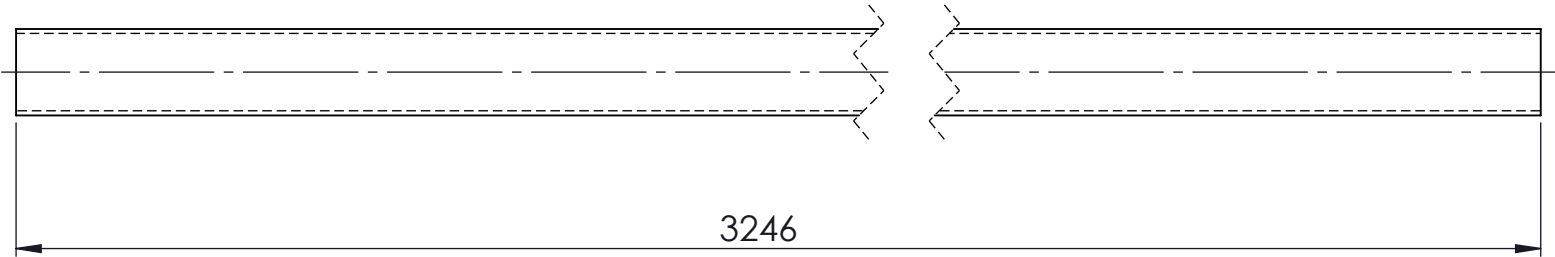
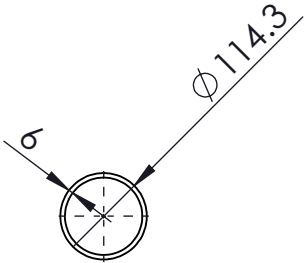
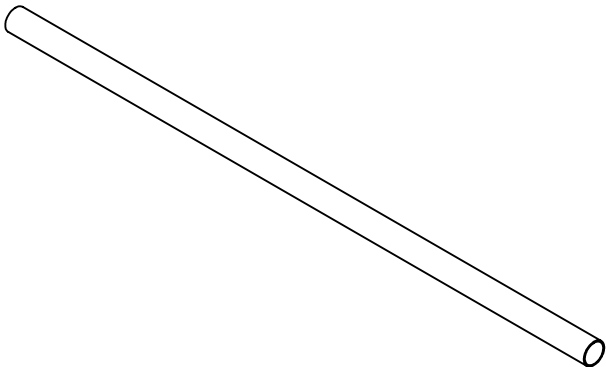


ITEM NO.	DESCRIPTION	LENGTH	MATERIAL	MASS (kg)
1	114x6.0 CHS	3246	316L STAINLESS STEEL	53.01



MATERIAL:- 316L STAINLESS STEEL

100NB SHED 40 PIPE 316 S/S WEIGHT - 53.01 kg

UNLESS OTHERWISE SPECIFIED: TOLERANCES: MACHINE + / - 0.25mm FABRICATION + / - 1.0 mm

DIMENSIONS IN
MILLIMETRES

CLIENT



14 Waratah St TUMUT NSW 2720
Ph: - 02 6947 4039
Email: roddyeng.com.au

TITLE:

100NB SHED 40 PIPE 316 S/S

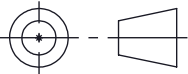
DWG NO. 13-2919-4-1

A4

DRAWN N DE BRUYN DATE 18/04/2024 SCALE:1:10 SHEET 1 OF 1

THIS DRAWING IS THE PROPERTY OF MECHANICAL
ENGINEERING & CAD SERVICES (MECS) Pty Ltd & MUST NOT
BE MANUFACTURED FROM,COPIED OR TRANSMITTED TO A
THIRD PARTY WITHOUT THE PRIOR APPROVAL FROM
MECHANICAL ENGINEERING & CAD SERVICES (MECS) Pty Ltd

MECS
Mechanical Engineering & CAD Services
11 Campbell Place WAGGA NSW 2650
Ph: - 0409 985 816
Email: nick@mecservices.com.au



THIRD ANGLE PROJECTION

WEIGHT: 53.01 kg