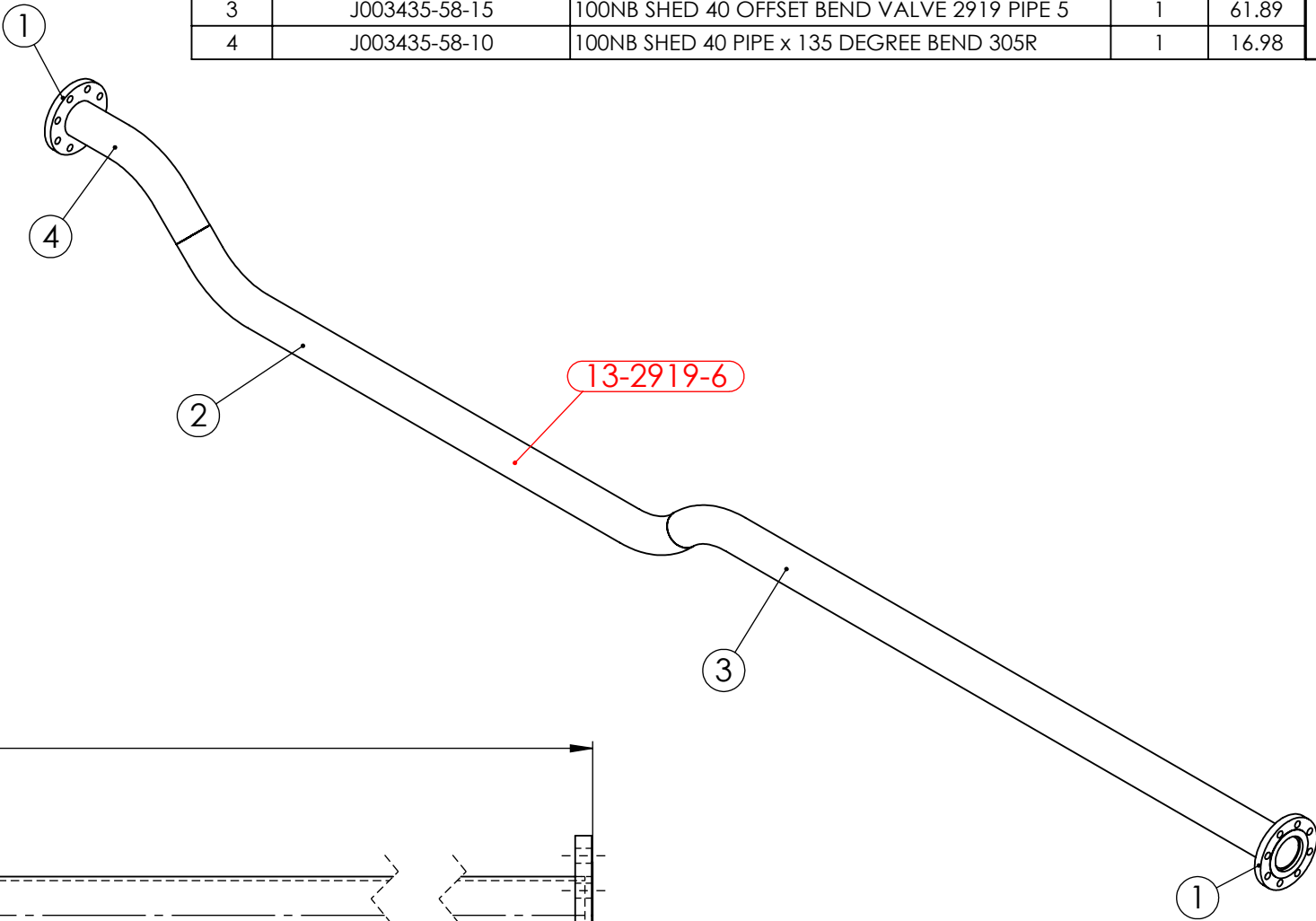


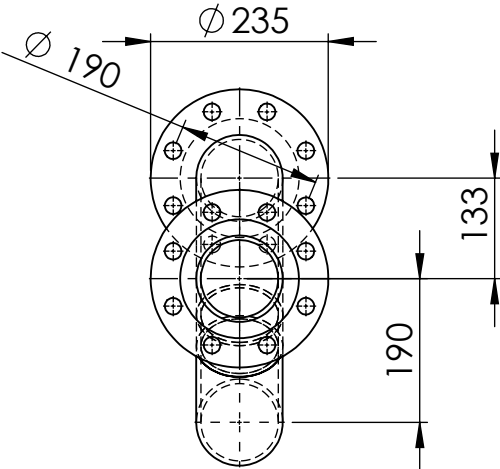
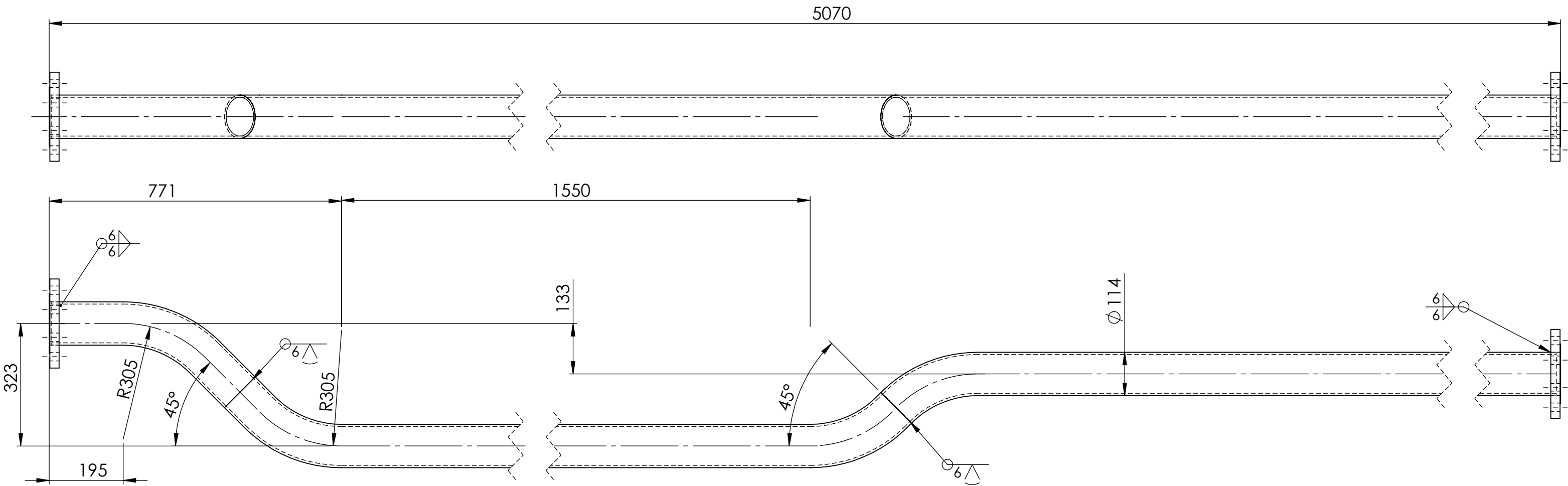
DIMENSIONS IN MILLIMETRES

ITEM	DRAWING No	DESCRIPTION	QTY.	MASS (kg)
1	OEM-100-PN25-SO-316L	100NB FLANGE PN25 SLIP ON 316L S/S	2	5.99
2	J003435-58-20	100NB SHED 40 OFFSET BEND VALVE 2919 PIPE 5	1	44.24
3	J003435-58-15	100NB SHED 40 OFFSET BEND VALVE 2919 PIPE 5	1	61.89
4	J003435-58-10	100NB SHED 40 PIPE x 135 DEGREE BEND 305R	1	16.98

RED EYE
QR CODE
AREA





PIPE LABEL - 13-2919-6



ISSUED FOR CONSTRUCTION 4/11/25

PIPEWORK MANUFACTURED OF A JIG - FLANGES AS PER DRAWING
DIMENSIONS ARE APPROXIMATE

UNIT 13 VALVE 2919 PIPE 6 WEIGHT - 97.11 kg

			UNLESS OTHERWISE SPECIFIED: TOLERANCES: MACHINE + / - 0.25mm FABRICATION + / - 1.0 mm	DRAWN N DE BRUYN 23/09/2025	DRAWING CHECKED						
			THIS DRG SUPPLIED BY  14 Waratah St, TUMUT NSW 2720 Ph: 02 6947 4039	DESIGNED	DESIGN CHECKED	M2 POWER SATATION UNIT 13 VALVE DOWN STREAM PIPE 6					
				SCALE 1:10 WORK ORDER No	APPROVED						
REV	NAME & DATE	DESCRIPTION	DRAWING No. 13-2919-6	REV:	SECTION No/KKS	A2 SHEET SIZE	SMA-DRG-NO			REV	SHEET 1 OF 1