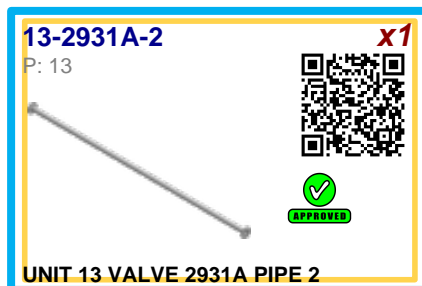
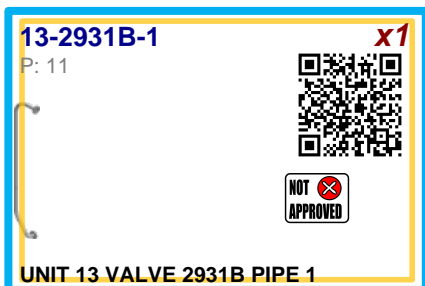
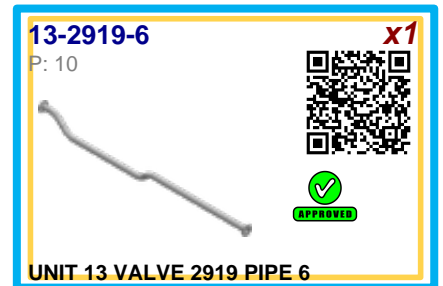
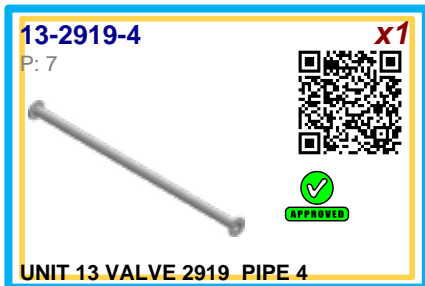
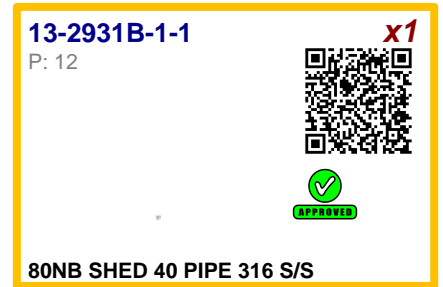
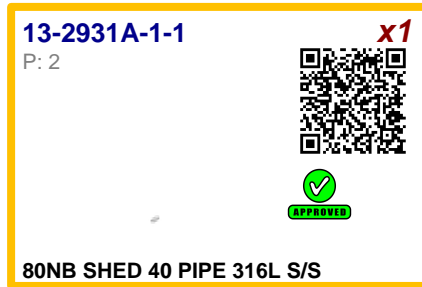
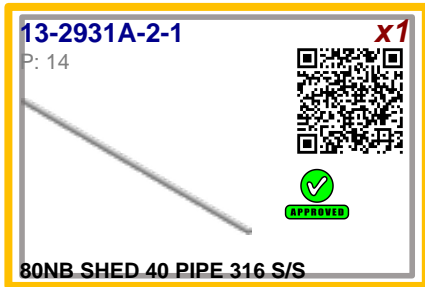
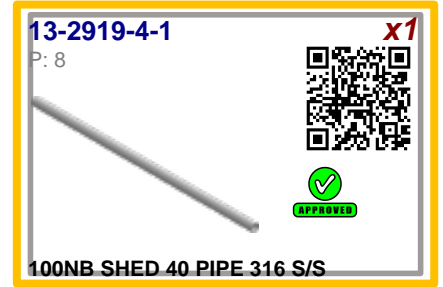
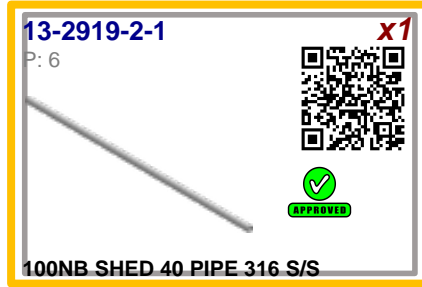


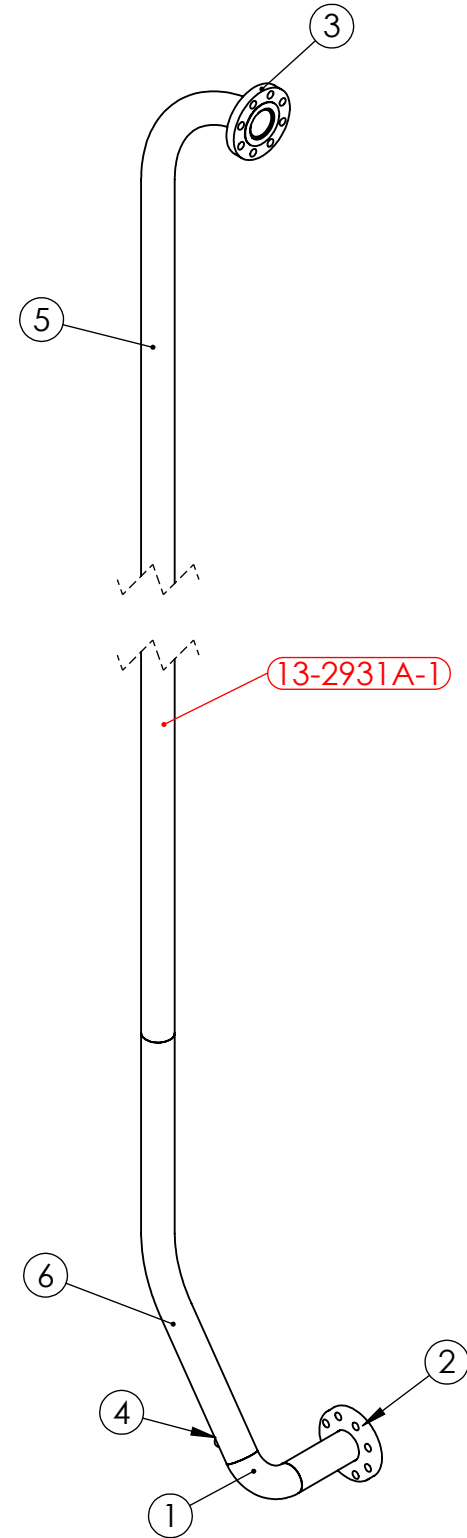
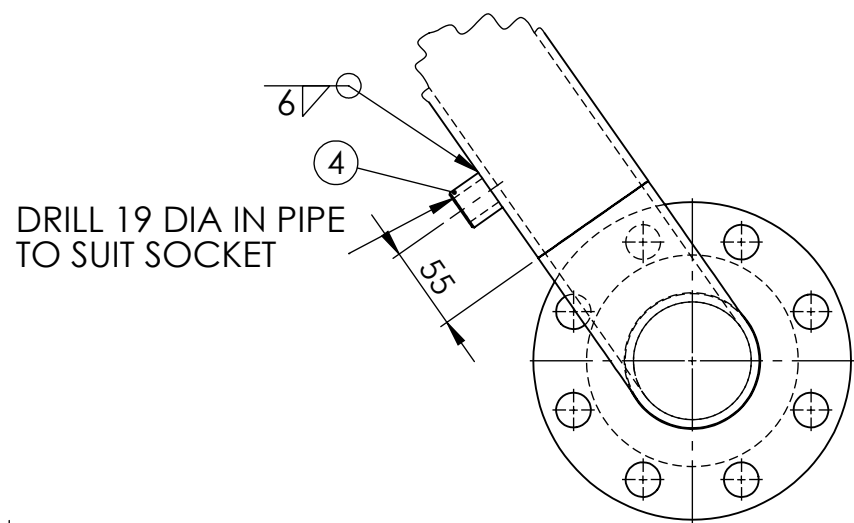
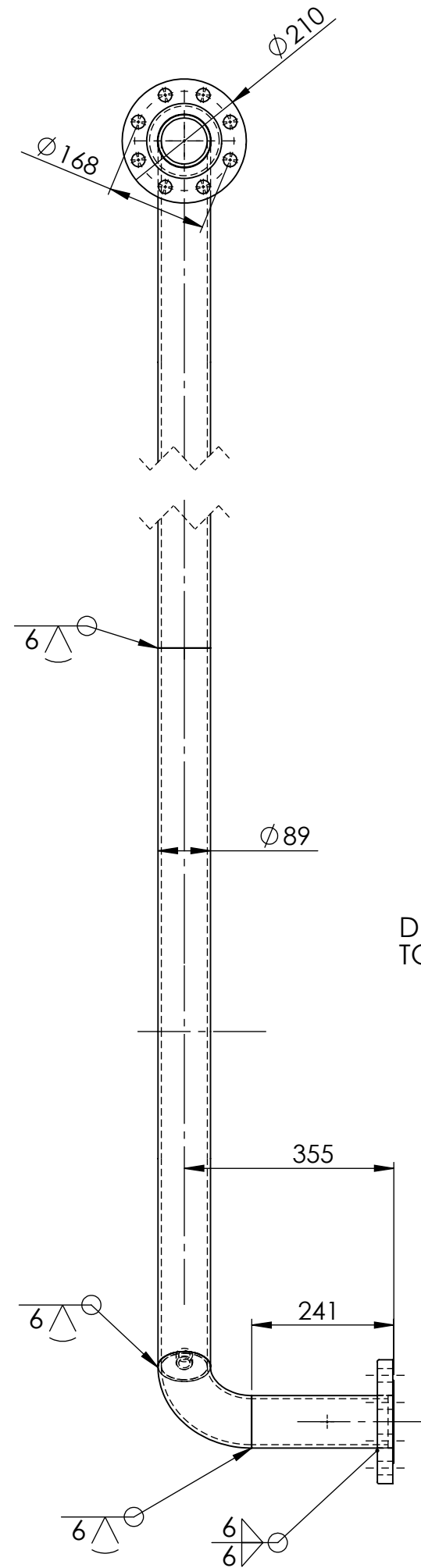
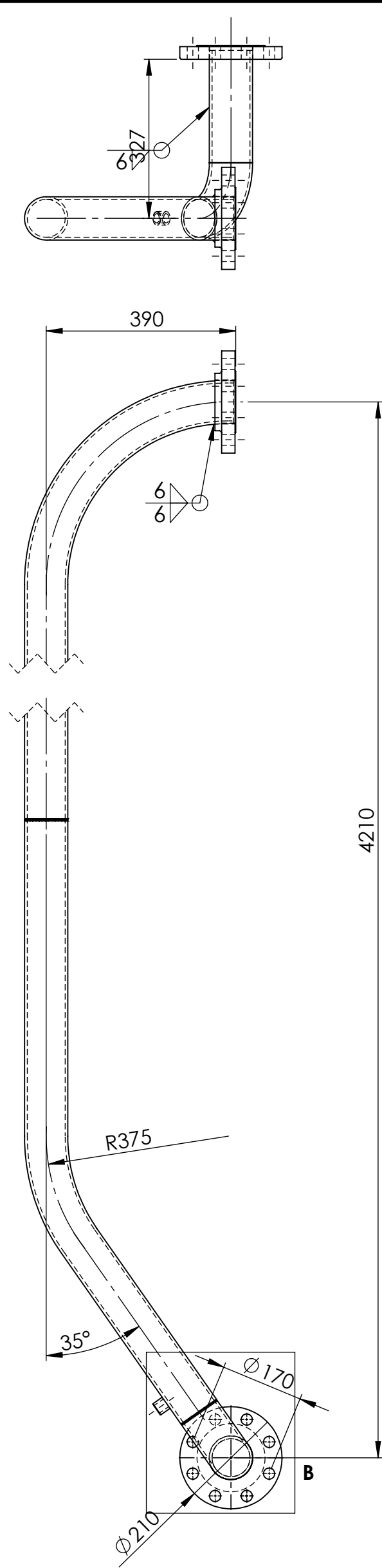
13-2919-2 Rev: - UNIT 13 VALVE 2919 DOWN STREAM PIPE 2	5
13-2919-2-1 Rev: - 100NB SHED 40 PIPE 316 S/S.....	6
13-2919-3 Rev: - UNIT 13 VALVE 2919 DOWNSTREAM PIPE 3	3
13-2919-3-2 Rev: - 100NB SHED 40 PIPE 316 S/S.....	4
13-2919-4 Rev: - UNIT 13 VALVE 2919 PIPE 4.....	7
13-2919-4-1 Rev: - 100NB SHED 40 PIPE 316 S/S.....	8
13-2919-5 Rev: - UNIT 13 VALVE 2919 DOWN STREAM PIPE 5	9
13-2919-6 Rev: - UNIT 13 VALVE 2919 PIPE 6.....	10
13-2931A-1 Rev: - UNIT 13 VALVE 2931A PIPE 1	1
13-2931A-1-1 Rev: - 80NB SHED 40 PIPE 316L S/S	2
13-2931A-2 Rev: - UNIT 13 VALVE 2931A PIPE 2.....	13
13-2931A-2-1 Rev: - 80NB SHED 40 PIPE 316 S/S	14
13-2931A-3 Rev: - UNIT 13 VALVE 2931A PIPE 3.....	15
13-2931B-1 Rev: - UNIT 13 VALVE 2931B PIPE 1	11
13-2931B-1-1 Rev: - 80NB SHED 40 PIPE 316 S/S	12

Visual index



ITEM	DRAWING No	DESCRIPTION	QTY.	MASS (kg)
1	OEM-80-LR-40-316L	80NB LONG RADIUS BEND SHED 40 316L S/S	1	2.06
2	OEM-80NB-JIS30K-P-316L	80NB PLATE FLANGE JIS 30 K 316L S/S	1	5.32
3	OEM-80NB-300-SF-316L	80NB - 300lb SLIP ON FLANGE 316L S/S	1	6.08
4	OEM-1_2-BSPP-3000-316L	1/2 BSPP 3000 Lb HALF COUPLING 316L S/S	1	0.06
5	J003435-69	80NB SHED 40 PIPE x 90 DEGREE BEND 400R	1	43.36
6	J003435-56	80NB SHED 40 PIPE x 145 DEGREE BEND 375R	1	17.63
7	13-2931A-1-1	80NB SHED 40 PIPE 316L S/S	1	2.66

RED EYE
QR CODE
AREA





PIPE LABEL - 13-2931A-1

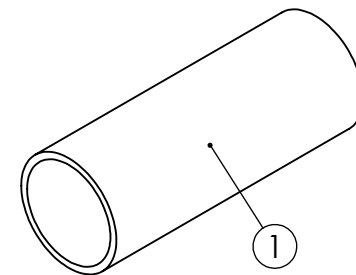
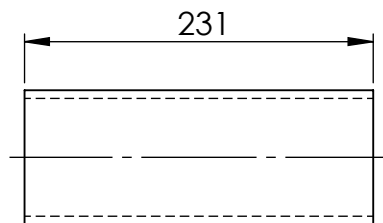
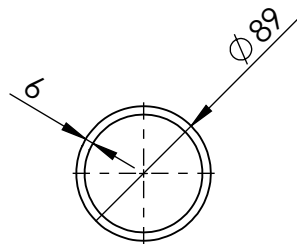
ISSUED FOR CONSTRUCTION 4/11/25

PIPEWORK MANUFACTURED OF A JIG - FLANGES AS PER DRAWING
DIMENSIONS ARE APPROXIMATE

UNIT 13 VALVE 2931A PIPE 1 WEIGHT - 67.28 kg

			UNLESS OTHERWISE SPECIFIED: TOLERANCES: MACHINE + / - 0.25mm FABRICATION + / - 1.0 mm		DRAWN N DE BRUYN 19/09/2025	DRAWING CHECKED				
			THIS DRG SUPPLIED BY  14 Waratah St, TUMUT NSW 2720 Ph: 02 6947 4039		DESIGNED	DESIGN CHECKED	M2 POWER STATION UNIT 13 VALVE 2931A DOWN STREAM PIPE 1			
					SCALE 1:10 WORK ORDER No	APPROVED				
REV	NAME & DATE	DESCRIPTION	DRAWING No. 13-2931A-1 REV:		SECTION No/KKS	A2 SHEET SIZE	SMA-DRG-NO		REV	SHEET 1 OF 1

ITEM NO.	DESCRIPTION	LENGTH	MATERIAL	MASS (kg)
1	88.90x5.5 CHS	230.5	316L STAINLESS STEEL	2.66



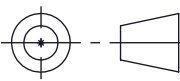
80NB SHED 40 PIPE 316L S/S WEIGHT - 2.66 kg

UNLESS OTHERWISE SPECIFIED: TOLERANCES: MACHINE + / - 0.25mm FABRICATION + / - 1.0 mm

THIS DRAWING IS THE PROPERTY OF MECHANICAL ENGINEERING & CAD SERVICES (MECS) Pty Ltd & MUST NOT BE MANUFACTURED FROM, COPIED OR TRANSMITTED TO A THIRD PARTY WITHOUT THE PRIOR APPROVAL FROM MECHANICAL ENGINEERING & CAD SERVICES (MECS) Pty Ltd

MECS
Mechanical Engineering & CAD Services
 11 Campbell Place WAGGA NSW 2650
 Ph: - 0409 985 816
 Email: nick@mecservices.com.au

DIMENSIONS IN MILLIMETRES



THIRD ANGLE PROJECTION

WEIGHT: 2.66 kg

CLIENT

RODDY
ENGINEERING

14 Waratah St TUMUT NSW 2720
 Ph: - 02 6947 4039
 Email: roddyeng.com.au

TITLE:
80NB SHED 40 PIPE 316L S/S

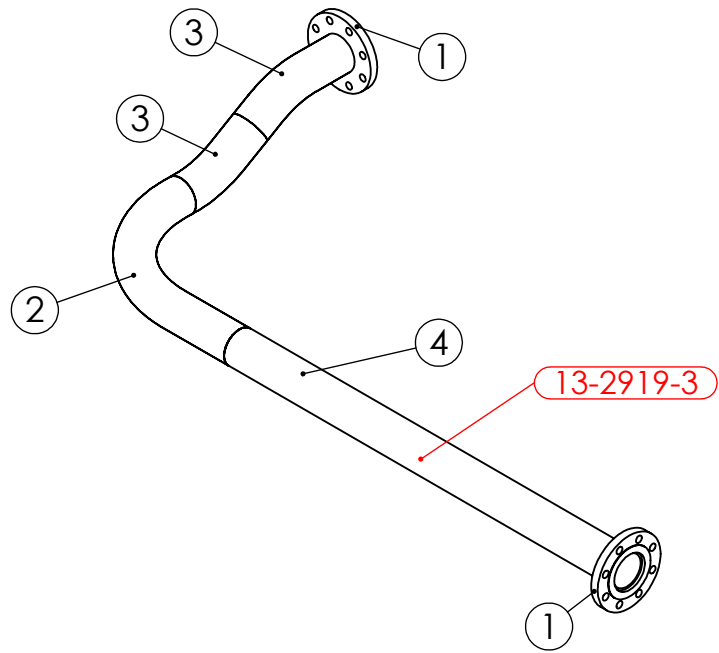
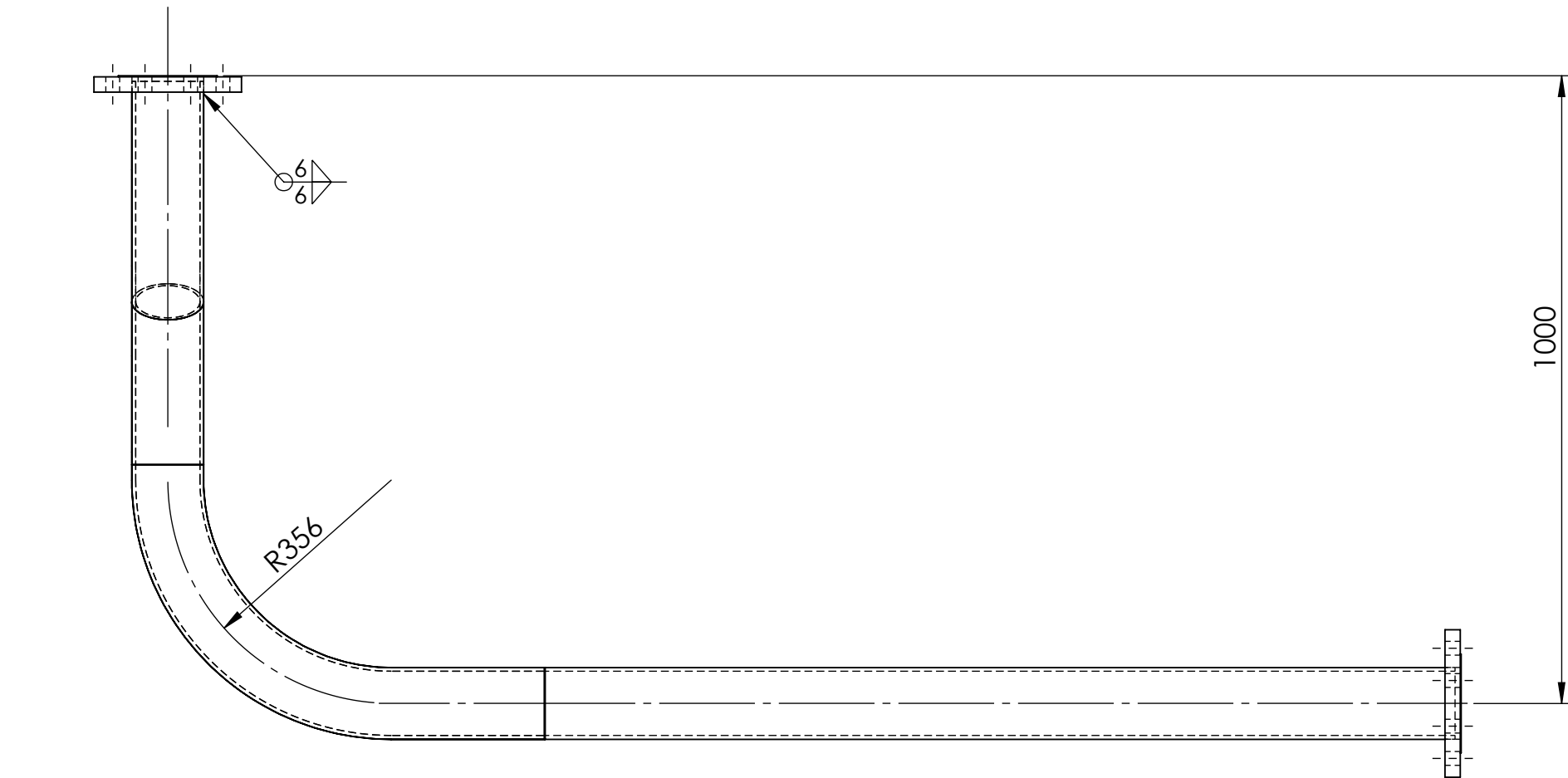
DWG NO. **13-2931A-1-1**

DRAWN N DE BRUYN DATE 19/09/2025 SCALE:1:5 SHEET **2**

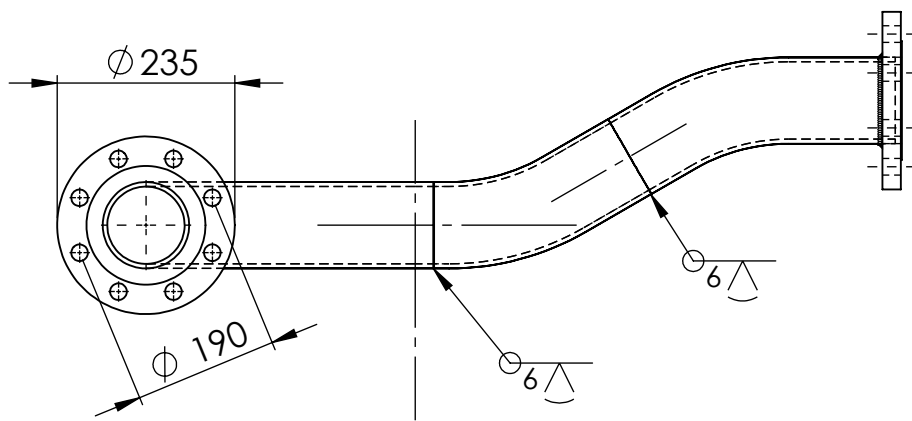
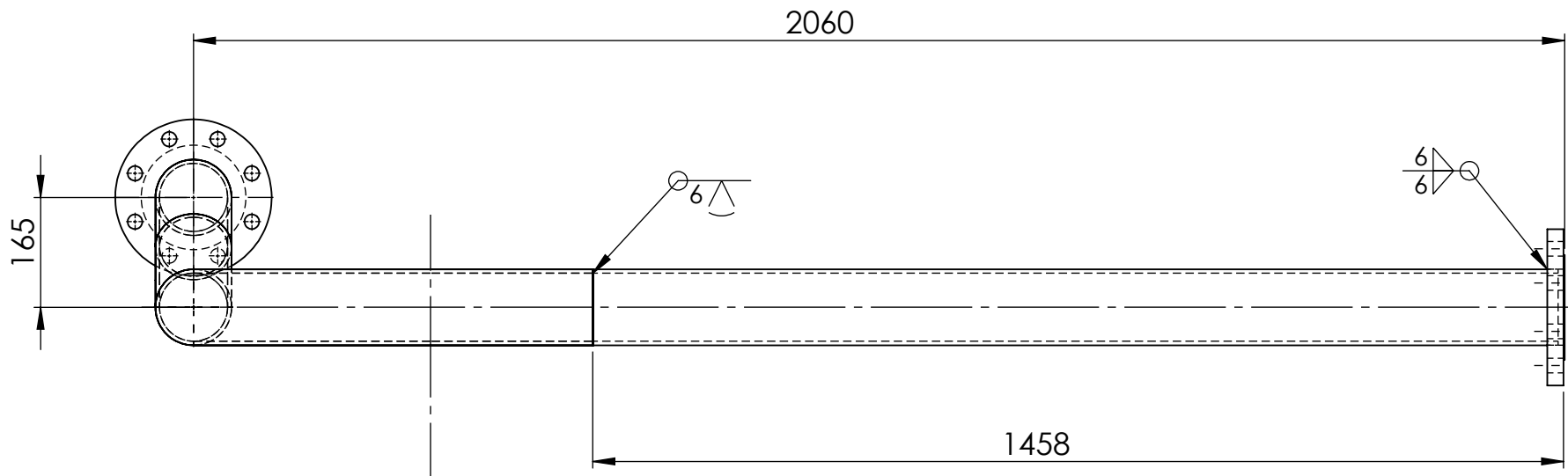
DIMENSIONS IN MILLIMETRES

ITEM	DRAWING No	DESCRIPTION	QTY.	MASS (kg)
1	OEM-100-PN25-SO-316L	100NB FLANGE PN25 SLIP ON 316L S/S	2	5.99
2	J003435-67-15	100NB SHED 40 PIPE x 90 DEGREE BEND 356R	1	17.13
3	J003435-67-10	100NB SHED 40 PIPE x 150 DEGREE BEND 305R	2	15.67
4	13-2919-3-2	100NB SHED 40 PIPE 316 S/S	1	23.68

RED EYE
QR CODE
AREA



PIPE LABEL - 13-2919-3



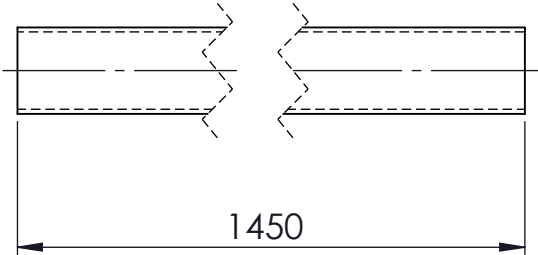
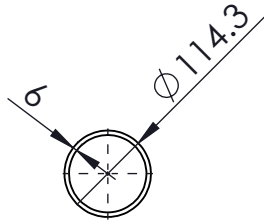
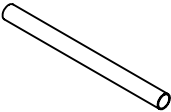
ISSUED FOR CONSTRUCTION - 30-10-25

PIPEWORK MANUFACTURED OF A JIG - FLANGES AS PER DRAWING
DIMENSIONS ARE APPROXIMATE

UNIT 13 VALVE 2919 DOWNSTREAM PIPE 3 WEIGHT - 83.86 kg



REV	NAME & DATE	DESCRIPTION	UNLESS OTHERWISE SPECIFIED: TOLERANCES: MACHINE + / - 0.25mm FABRICATION + / - 1.0 mm	DRAWN N DE BRUYN 19/09/2025	DRAWING CHECKED		
			THIS DRG SUPPLIED BY 14 Waratah St, TUMUT NSW 2720 Ph: 02 6947 4039	DESIGNED	DESIGN CHECKED	M2 POWER STATION UNIT 13 VALVE 2919 DOWNSTREAM PIPE 3	
			DRAWING No. 13-2919-3	SCALE 1:10 WORK ORDER No	APPROVED		
			REV:	SECTION No/KKS	A2 SHEET SIZE	SMA-DRG-NO	SHEET 1 OF 1

ITEM NO.	DESCRIPTION	LENGTH	MATERIAL	MASS (kg)
1	114x6.0 CHS	1450	316L STAINLESS STEEL	23.68

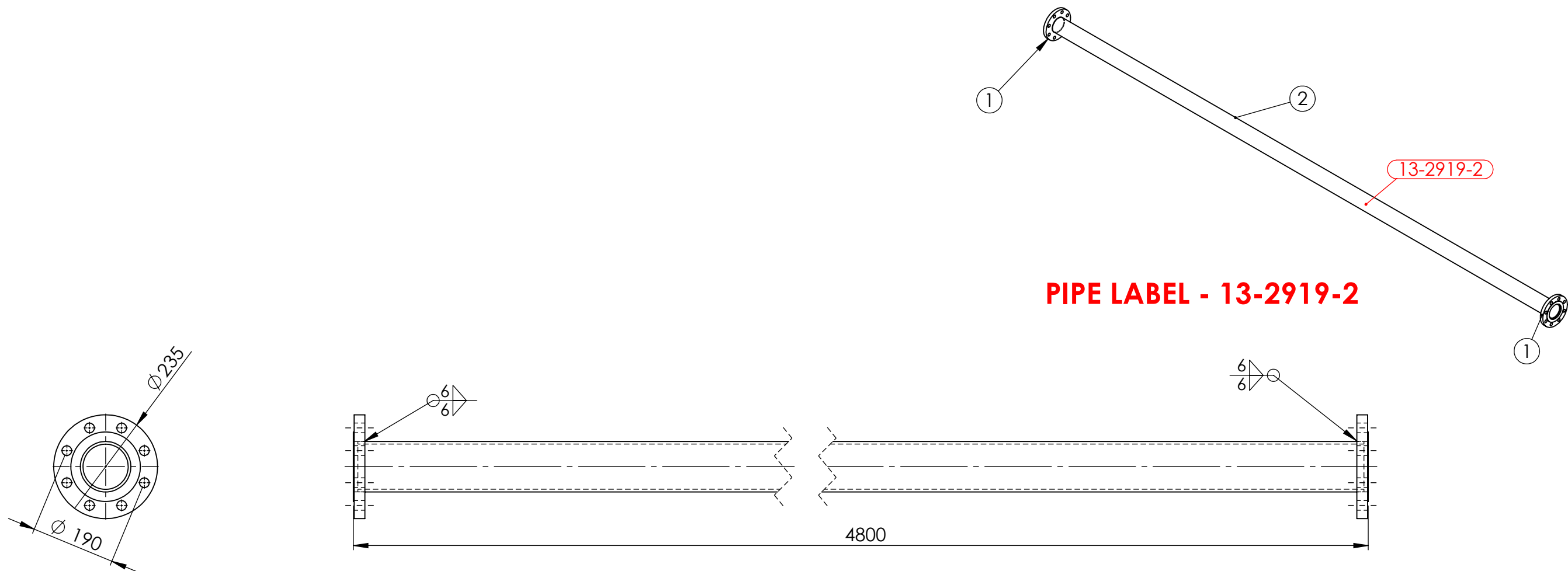


MATERIAL:- 316L STAINLESS STEEL

100NB SHED 40 PIPE 316 S/S WEIGHT - 23.68 kg

UNLESS OTHERWISE SPECIFIED: TOLERANCES: MACHINE + / - 0.25mm FABRICATION + / - 1.0 mm		DIMENSIONS IN MILLIMETRES	CLIENT	TITLE:	
THIS DRAWING IS THE PROPERTY OF MECHANICAL ENGINEERING & CAD SERVICES (MECS) Pty Ltd & MUST NOT BE MANUFACTURED FROM,COPIED OR TRANSMITTED TO A THIRD PARTY WITHOUT THE PRIOR APPROVAL FROM MECHANICAL ENGINEERING & CAD SERVICES (MECS) Pty Ltd	<div>MECS</div> <div>Mechanical Engineering & CAD Services</div> <div>11 Campbell Place WAGGA NSW 2650</div> <div>Ph: - 0409 985 816</div> <div>Email: nick@mecservices.com.au</div>	<div></div> <div>THIRD ANGLE PROJECTION</div> <div>WEIGHT: 23.68 kg</div>	<div></div> <div>14 Waratah St TUMUT NSW 2720</div> <div>Ph: - 02 6947 4039</div> <div>Email: roddyeng.com.au</div>	100NB SHED 40 PIPE 316 S/S	
				DWG NO.	A4
				13-2919-3-2	
DRAWN N DE BRUYN		DATE 19/09/2025		SCALE:1:10	SHEET 4

ITEM	DRAWING No	DESCRIPTION	QTY.	MASS (kg)
1	OEM-100-PN25-SO-316L	100NB FLANGE PN25 SLIP ON 316L S/S	2	5.99
2	13-2919-2-1	100NB SHED 40 PIPE 316 S/S	1	78.06



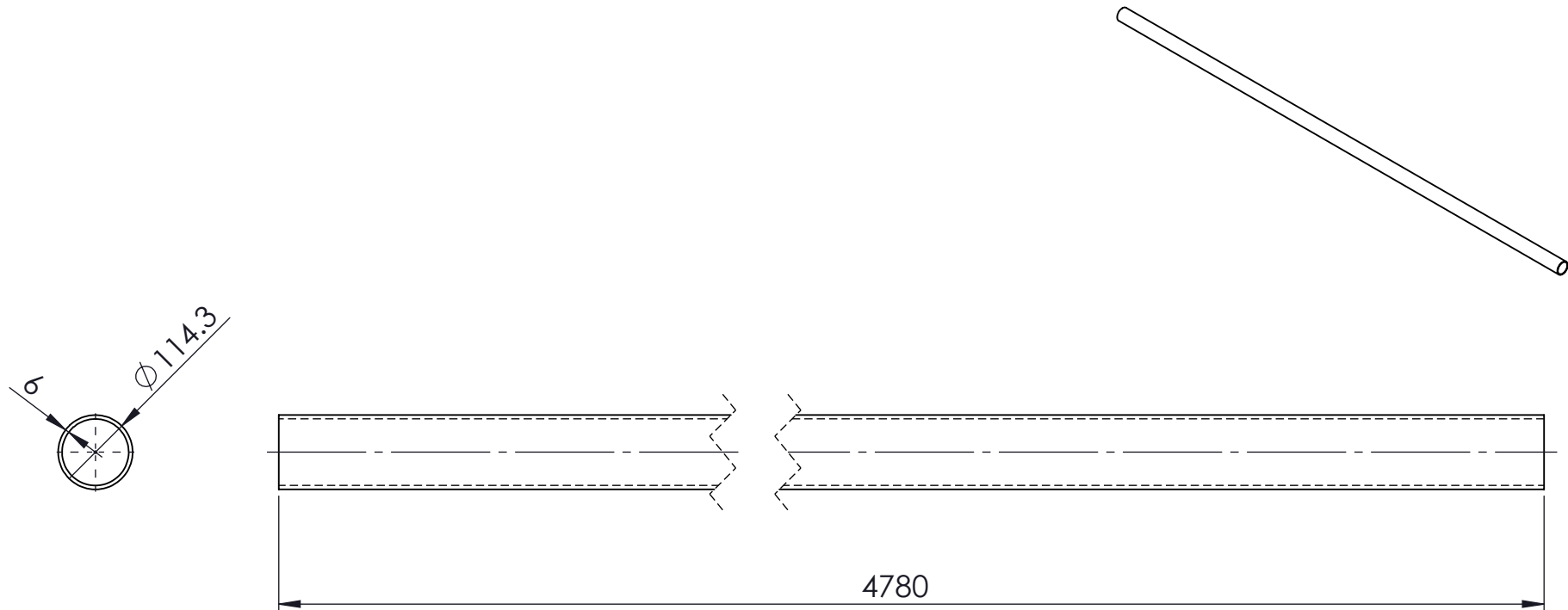
ISSUED FOR CONSTRUCTION 31/10/25

PIPEWORK MANUFACTURED OF A JIG - FLANGES AS PER DRAWING
DIMENSIONS ARE APPROXIMATE

UNIT 13 VALVE 2919 DOWN STREAM PIPE 2 WEIGHT - 90.04 kg



REV	NAME & DATE	DESCRIPTION	UNLESS OTHERWISE SPECIFIED: TOLERANCES: MACHINE + / - 0.25mm FABRICATION + / - 1.0 mm	DRAWN N DE BRUYN 19/09/2025	DRAWING CHECKED		
			THIS DRG SUPPLIED BY 14 Waratah St, TUMUT NSW 2720 Ph: 02 6947 4039	DESIGNED	DESIGN CHECKED	M2 POWER STATION UNIT 13 VALVE 2919 DOWN STREAM PIPE 2	
			DRAWING No. 13-2919-2	SCALE 1:20 WORK ORDER No	APPROVED		
				SECTION No/KKS	A3 SHEET SIZE	SMA-DRG-NO	SHEET 1 OF 1

ITEM NO.	DESCRIPTION	LENGTH	MATERIAL	MASS (kg)
1	114x6.0 CHS	4780	316L STAINLESS STEEL	78.06



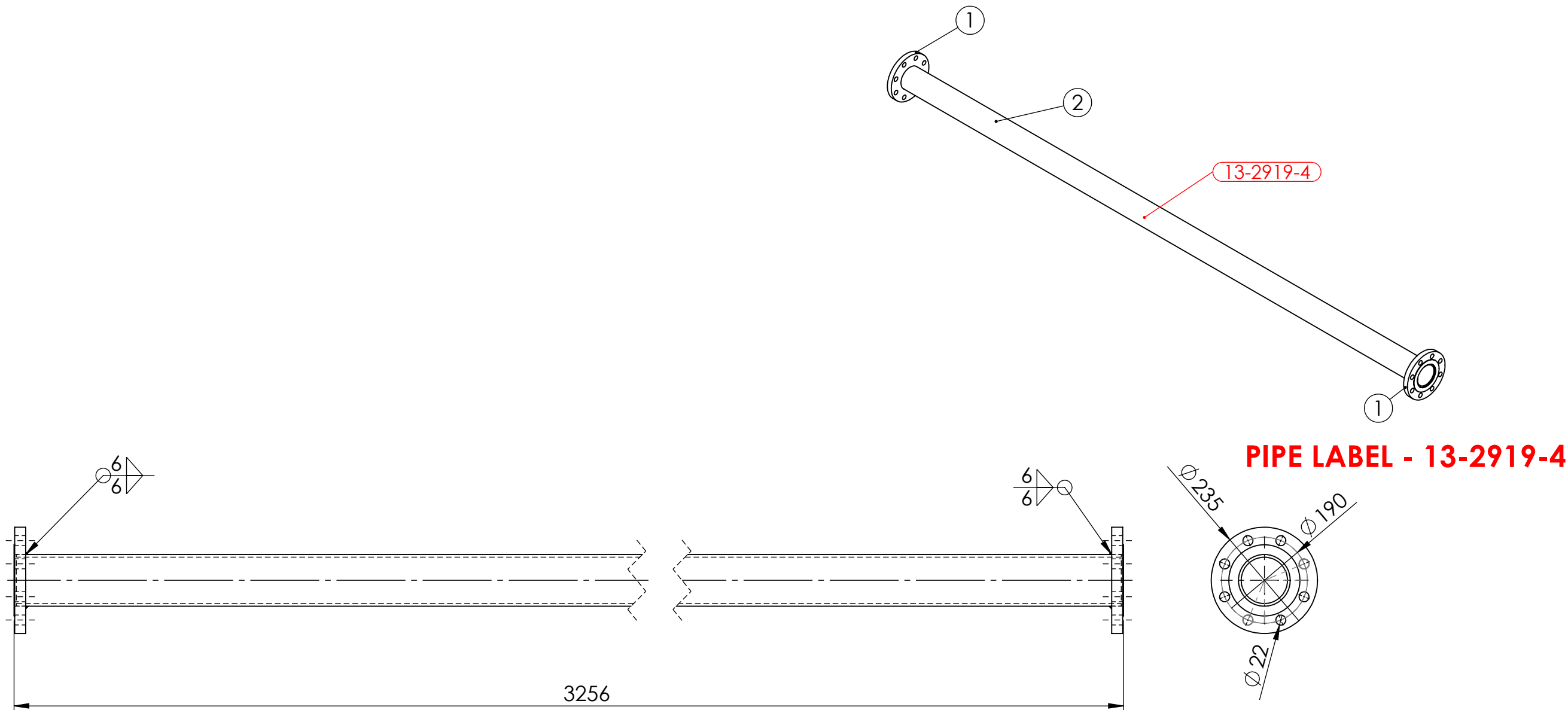
MATERIAL:- 316L STAINLESS STEEL

100NB SHED 40 PIPE 316 S/S WEIGHT - 78.06 kg

UNLESS OTHERWISE SPECIFIED: TOLERANCES: MACHINE + / - 0.25mm FABRICATION + / - 1.0 mm		DIMENSIONS IN MILLIMETRES	CLIENT	TITLE:	
THIS DRAWING IS THE PROPERTY OF MECHANICAL ENGINEERING & CAD SERVICES (MECS) Pty Ltd & MUST NOT BE MANUFACTURED FROM, COPIED OR TRANSMITTED TO A THIRD PARTY WITHOUT THE PRIOR APPROVAL FROM MECHANICAL ENGINEERING & CAD SERVICES (MECS) Pty Ltd	<div>MECS</div> <div>Mechanical Engineering & CAD Services</div> <div>11 Campbell Place WAGGA NSW 2650</div> <div>Ph: - 0409 985 816</div> <div>Email: nick@mecservices.com.au</div>	 <div>THIRD ANGLE PROJECTION</div> <div>WEIGHT: 78.06 kg</div>	<div> RODDY ENGINEERING</div> <div>14 Waratah St TUMUT NSW 2720</div> <div>Ph: - 02 6947 4039</div> <div>Email: roddyeng.com.au</div>	100NB SHED 40 PIPE 316 S/S	
				DWG NO. 13-2919-2-1	
				A4	
		DRAWN N DE BRUYN			
		DATE 19/09/2025			
SCALE: 1:10					
SHEET 6					

DIMENSIONS IN MILLIMETRES

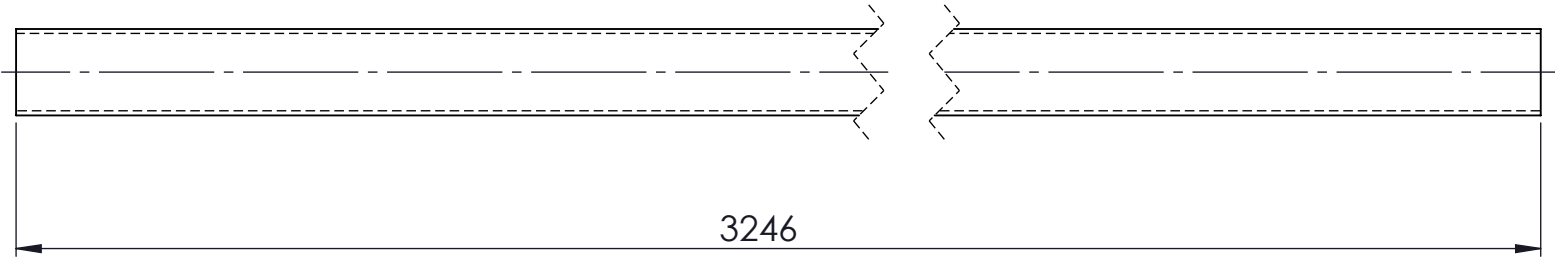
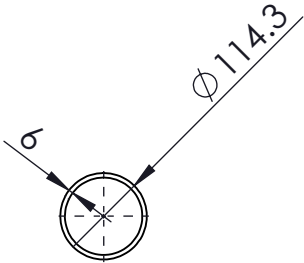
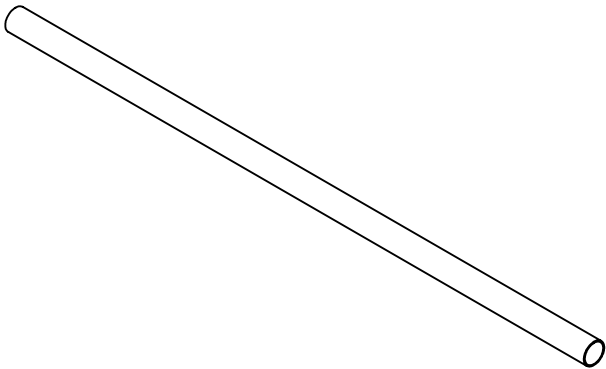
ITEM	DRAWING No	DESCRIPTION	QTY.	MASS (kg)
1	OEM-100-PN25-SO-316L	100NB FLANGE PN25 SLIP ON 316L S/S	2	5.99
2	13-2919-4-1	100NB SHED 40 PIPE 316 S/S	1	53.01



UNIT 13 VALVE 2919 PIPE 4 WEIGHT - 64.99 kg

REV	NAME & DATE	DESCRIPTION	UNLESS OTHERWISE SPECIFIED: TOLERANCES: MACHINE + / - 0.25mm FABRICATION + / - 1.0 mm	DRAWN N DE BRUYN 23/09/2025	DRAWING CHECKED		
			THIS DRG SUPPLIED BY 14 Waratah St, TUMUT NSW 2720 Ph: 02 6947 4039	DESIGNED	DESIGN CHECKED	M2 POWER STATION UNIT 13 VALVE 2919 DOWNSTREAM PIPE 4	
			DRAWING No. 13-2919-4	SCALE 1:10 WORK ORDER No	APPROVED		
				SECTION No/KKS	A3 SHEET SIZE	SMA-DRG-NO	REV SHEET 1 OF 1

ITEM NO.	DESCRIPTION	LENGTH	MATERIAL	MASS (kg)
1	114x6.0 CHS	3246	316L STAINLESS STEEL	53.01



MATERIAL:- 316L STAINLESS STEEL

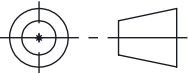
100NB SHED 40 PIPE 316 S/S WEIGHT - 53.01 kg

UNLESS OTHERWISE SPECIFIED: TOLERANCES: MACHINE + / - 0.25mm FABRICATION + / - 1.0 mm

DIMENSIONS IN
MILLIMETRES

THIS DRAWING IS THE PROPERTY OF MECHANICAL
ENGINEERING & CAD SERVICES (MECS) Pty Ltd & MUST NOT
BE MANUFACTURED FROM, COPIED OR TRANSMITTED TO A
THIRD PARTY WITHOUT THE PRIOR APPROVAL FROM
MECHANICAL ENGINEERING & CAD SERVICES (MECS) Pty Ltd

MECS
Mechanical Engineering & CAD Services
11 Campbell Place WAGGA NSW 2650
Ph: - 0409 985 816
Email: nick@mecservices.com.au



THIRD ANGLE PROJECTION

WEIGHT: 53.01 kg

CLIENT

RODDY
ENGINEERING

14 Waratah St TUMUT NSW 2720
Ph: - 02 6947 4039
Email: roddyeng.com.au

TITLE:

100NB SHED 40 PIPE 316 S/S

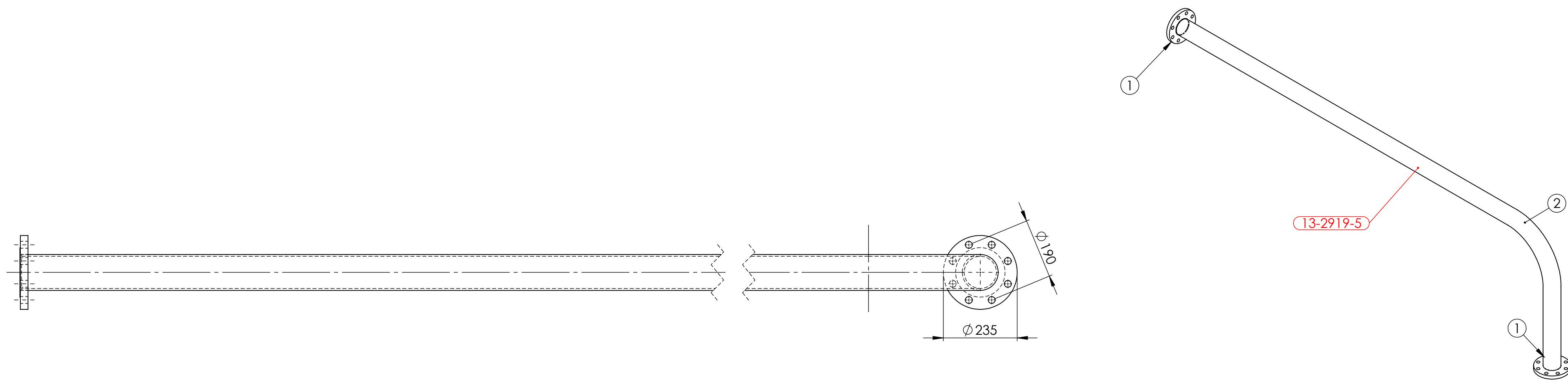
DWG NO. 13-2919-4-1

A4

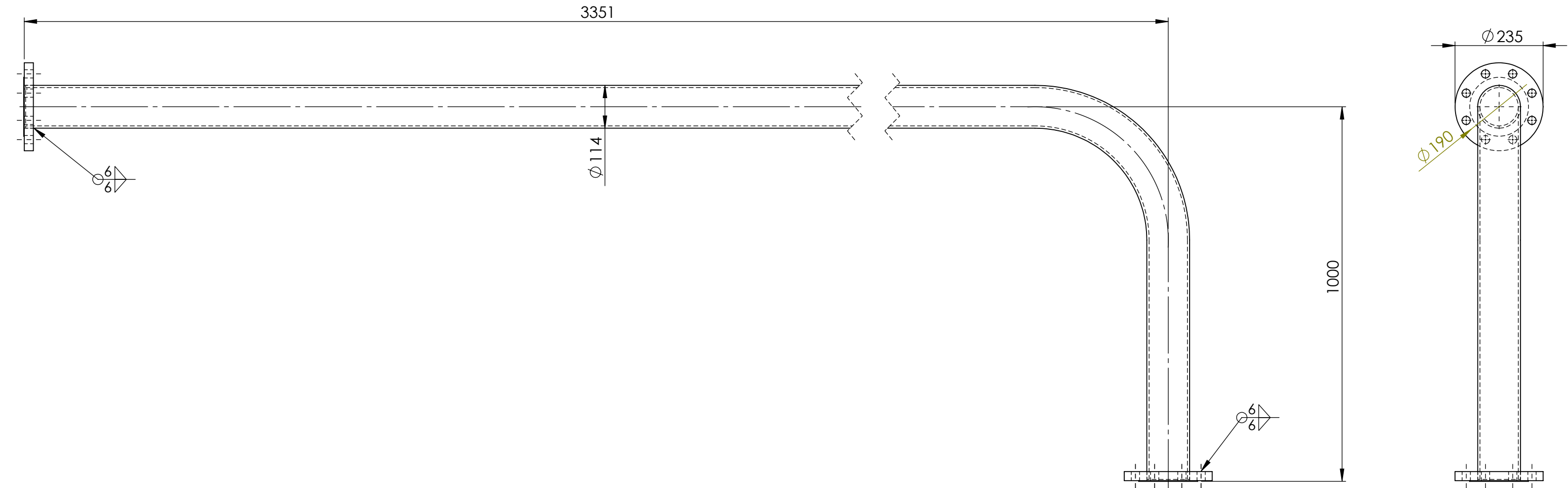
DRAWN N DE BRUYN DATE 18/04/2024 SCALE: 1:10 SHEET

ITEM	DRAWING No	DESCRIPTION	QTY.	MASS (kg)
1	OEM-100-PN25-SO-316L	100NB FLANGE PN25 SLIP ON 316L S/S	2	5.99
2	J003435-51	100NB SHED 40 PIPE x 90 DEGREE BEND 356R	1	98.30

RED EYE
QR CODE
AREA





PIPE LABEL - 13-2919-5



PIPEWORK MANUFACTURED OF A JIG - FLANGES AS PER DRAWING
DIMENSIONS ARE APPROXIMATE

ISSUED FOR CONSTRUCTION 4/11/25

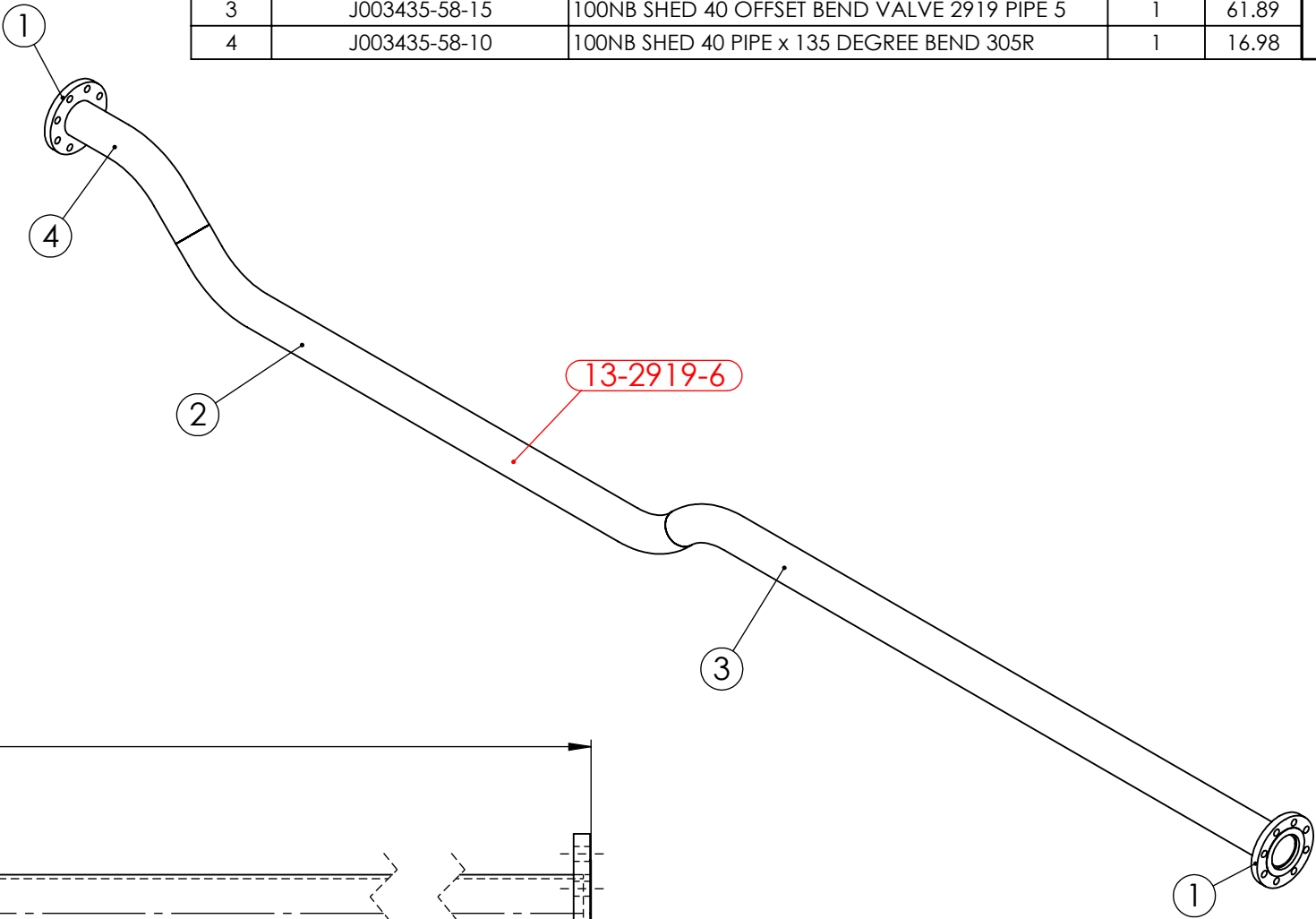
UNIT 13 VALVE 2919 DOWN STREAM PIPE 5 WEIGHT - 80.41 kg

			UNLESS OTHERWISE SPECIFIED: TOLERANCES: MACHINE + / - 0.25mm FABRICATION + / - 1.0 mm	DRAWN N DE BRUYN 19/09/2025	DRAWING CHECKED				
			THIS DRG SUPPLIED BY  14 Waratah St, TUMUT NSW 2720 Ph: 02 6947 4039	DESIGNED	DESIGN CHECKED	M2 POWER STATION UNIT 13 VALVE 2919 DOWN STREAM PIPE 5			
				SCALE 1:10 WORK ORDER No	APPROVED				
REV	NAME & DATE	DESCRIPTION	DRAWING No. 13-2919-5	REV:	SECTION No/KKS	A2 SHEET SIZE	SMA-DRG-NO	REV	SHEET 1 OF 1

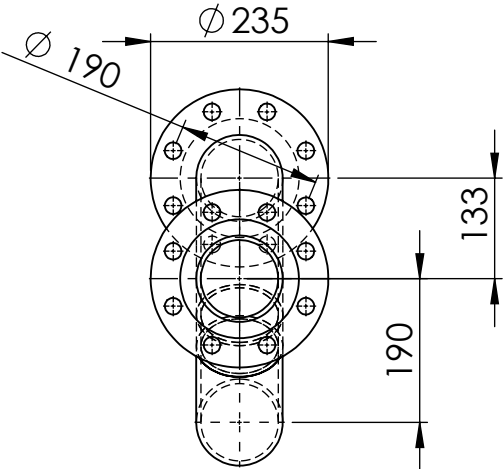
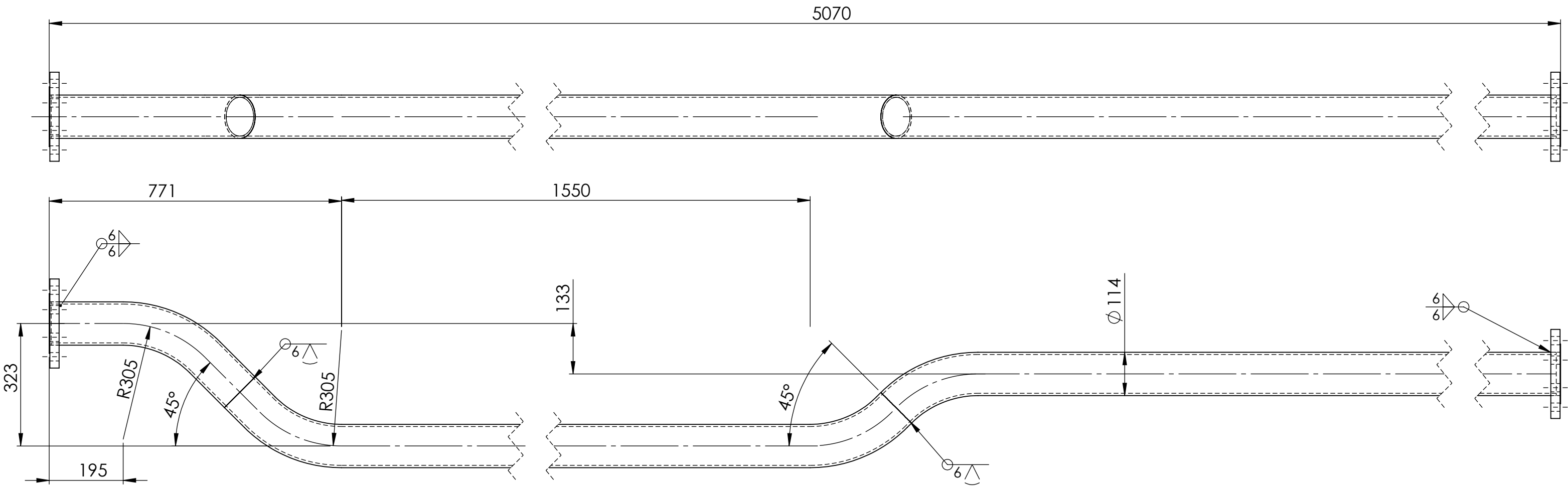
DIMENSIONS IN MILLIMETRES

ITEM	DRAWING No	DESCRIPTION	QTY.	MASS (kg)
1	OEM-100-PN25-SO-316L	100NB FLANGE PN25 SLIP ON 316L S/S	2	5.99
2	J003435-58-20	100NB SHED 40 OFFSET BEND VALVE 2919 PIPE 5	1	44.24
3	J003435-58-15	100NB SHED 40 OFFSET BEND VALVE 2919 PIPE 5	1	61.89
4	J003435-58-10	100NB SHED 40 PIPE x 135 DEGREE BEND 305R	1	16.98

RED EYE
QR CODE
AREA





PIPE LABEL - 13-2919-6

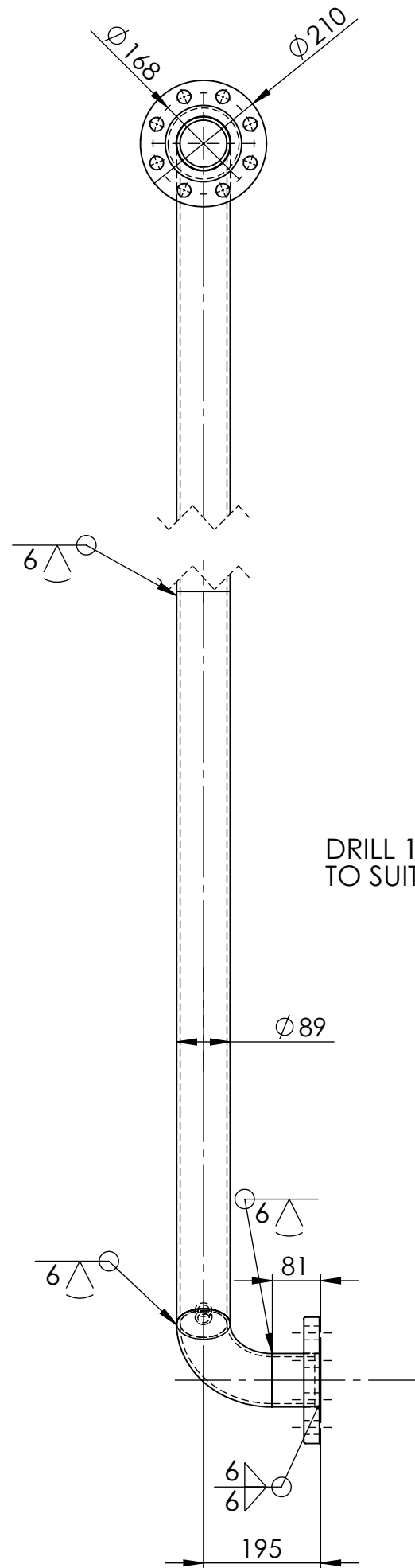
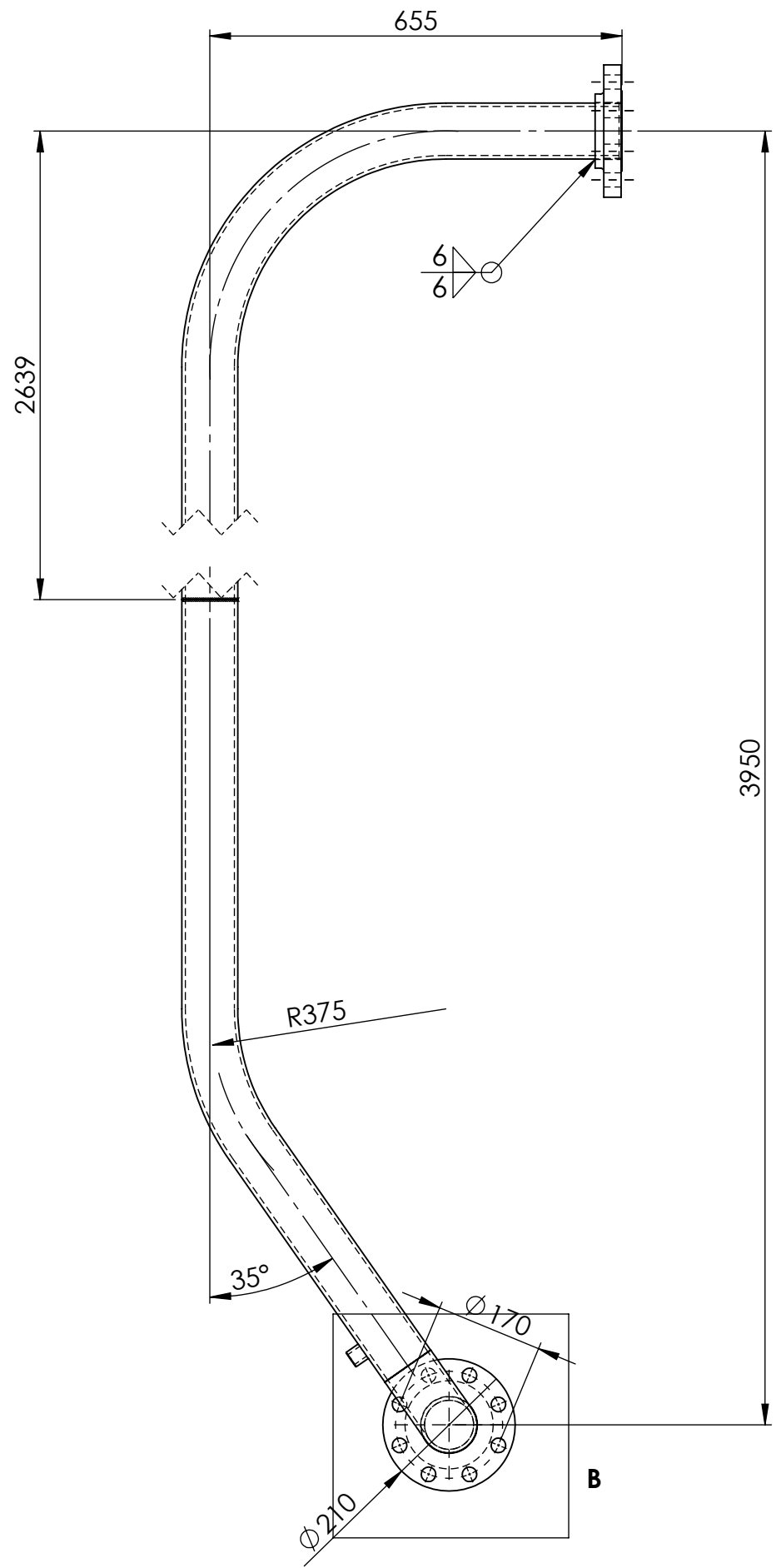
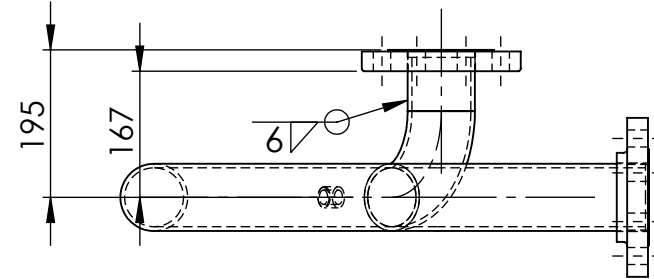


ISSUED FOR CONSTRUCTION 4/11/25

PIPEWORK MANUFACTURED OF A JIG - FLANGES AS PER DRAWING
DIMENSIONS ARE APPROXIMATE

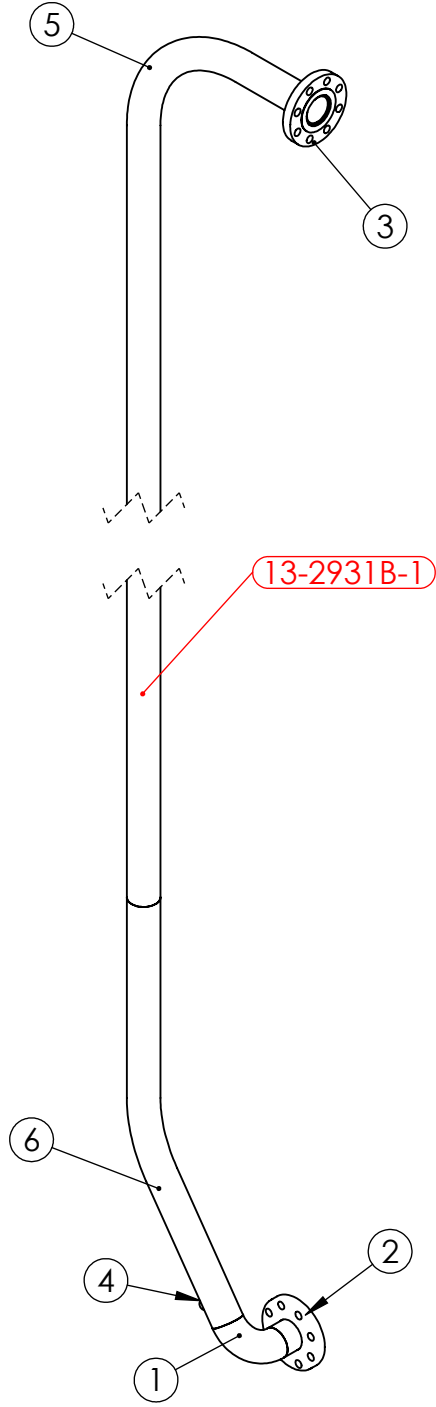
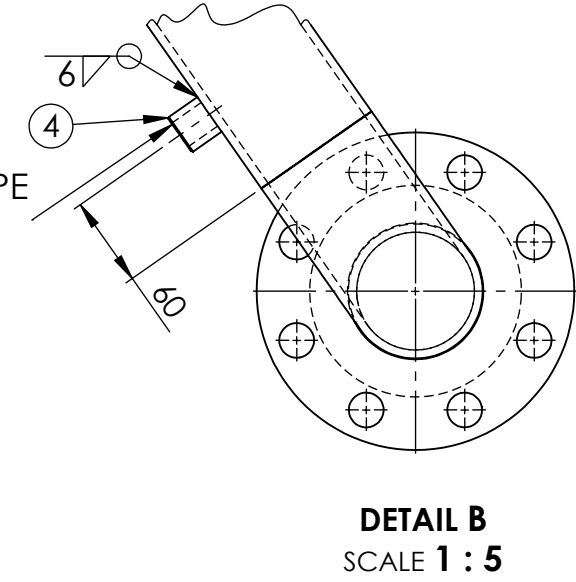
UNIT 13 VALVE 2919 PIPE 6 WEIGHT - 97.11 kg

			UNLESS OTHERWISE SPECIFIED: TOLERANCES: MACHINE + / - 0.25mm FABRICATION + / - 1.0 mm	DRAWN N DE BRUYN 23/09/2025	DRAWING CHECKED					
			THIS DRG SUPPLIED BY  14 Waratah St, TUMUT NSW 2720 Ph: 02 6947 4039	DESIGNED	DESIGN CHECKED	M2 POWER SATATION UNIT 13 VALVE DOWN STREAM PIPE 6				
				SCALE 1:10 WORK ORDER No	APPROVED					
REV	NAME & DATE	DESCRIPTION	DRAWING No. 13-2919-6	REV:	SECTION No/KKS	A2 SHEET SIZE	SMA-DRG-NO		REV	SHEET 1 OF 1



ITEM	DRAWING No	DESCRIPTION	QTY.	MASS (kg)
1	OEM-80-LR-40-316L	80NB LONG RADIUS BEND SHED 40 316L S/S	1	2.06
2	OEM-80NB-JIS30K-P-316L	80NB PLATE FLANGE JIS 30 K 316L S/S	1	5.32
3	OEM-80NB-300-SF-316L	80NB - 300lb SLIP ON FLANGE 316L S/S	1	6.08
4	OEM-1_2-BSPP-3000-316L	1/2 BSPP 3000 Lb HALF COUPLING 316L S/S	1	0.06
5	J003435-69	80NB SHED 40 PIPE x 90 DEGREE BEND 400R	1	43.36
6	J003435-56	80NB SHED 40 PIPE x 145 DEGREE BEND 375R	1	17.63
7	13-2931B-1-1	80NB SHED 40 PIPE 316 S/S	1	0.81

RED EYE
QR CODE
AREA





PIPE LABEL - 13-2931B-1

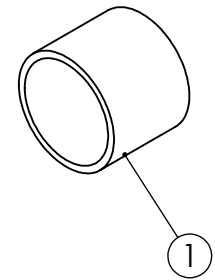
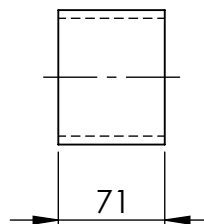
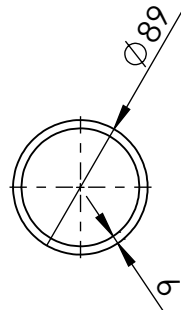
ISSUED FOR CONSTRUCTION 4/11/25

PIPEWORK MANUFACTURED OF A JIG - FLANGES AS PER DRAWING
DIMENSIONS ARE APPROXIMATE

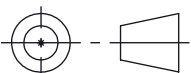


UNIT 13 VALVE 2931B PIPE 1 WEIGHT - 65.49 kg

			UNLESS OTHERWISE SPECIFIED: TOLERANCES: MACHINE + / - 0.25mm FABRICATION + / - 1.0 mm		DRAWN N DE BRUYN 19/09/2025	DRAWING CHECKED				
			THIS DRG SUPPLIED BY  14 Waratah St, TUMUT NSW 2720 Ph: 02 6947 4039		DESIGNED	DESIGN CHECKED	M2 POWER STATION UNIT 13 VALVE 2931B DOWNSTREAM PIPE 1			
					SCALE 1:10 WORK ORDER No	APPROVED				
REV	NAME & DATE	DESCRIPTION	DRAWING No. 13-2931B-1		REV:	SECTION No/KKS	A2 SHEET SIZE	SMA-DRG-NO	REV	SHEET 1 OF 1

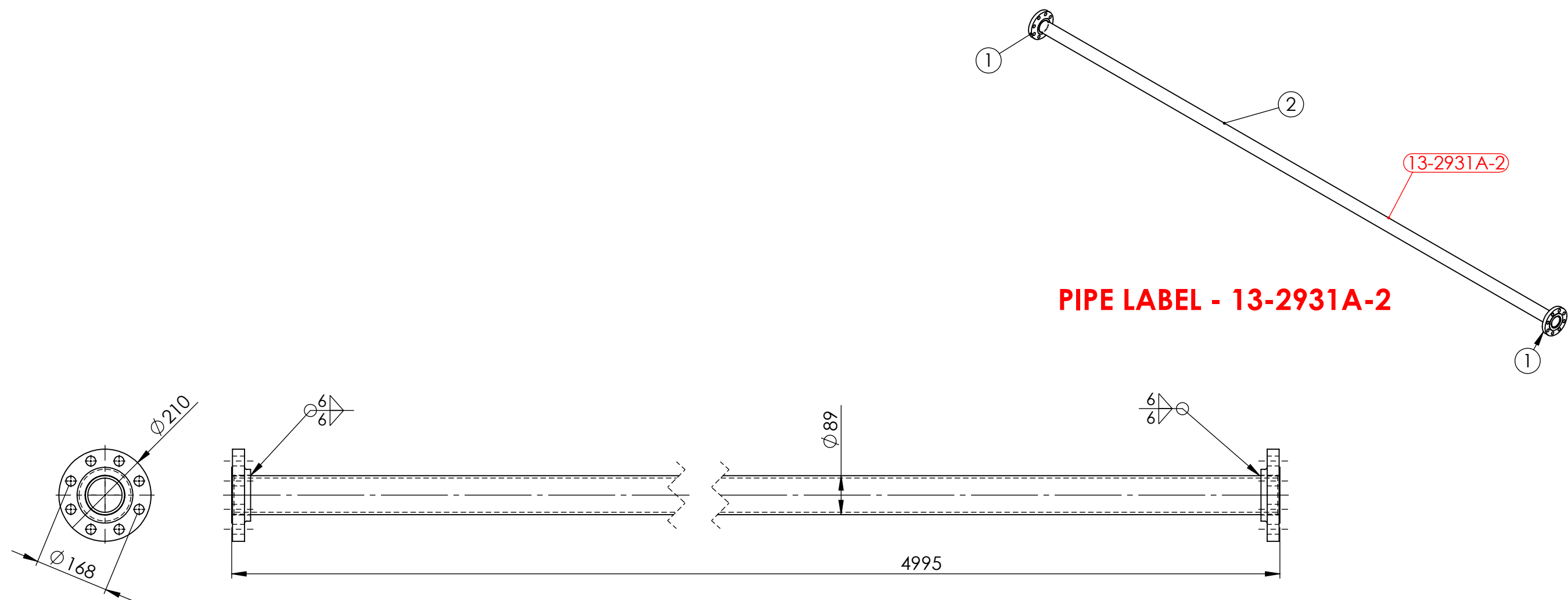
ITEM NO.	DESCRIPTION	LENGTH	MATERIAL	MASS (kg)
1	88.90x5.5 CHS	70.5	316L STAINLESS STEEL	0.81



80NB SHED 40 PIPE 316 S/S WEIGHT - 0.81 kg

UNLESS OTHERWISE SPECIFIED: TOLERANCES: MACHINE + / - 0.25mm FABRICATION + / - 1.0 mm		DIMENSIONS IN MILLIMETRES		CLIENT		TITLE:	
THIS DRAWING IS THE PROPERTY OF MECHANICAL ENGINEERING & CAD SERVICES (MECS) Pty Ltd & MUST NOT BE MANUFACTURED FROM, COPIED OR TRANSMITTED TO A THIRD PARTY WITHOUT THE PRIOR APPROVAL FROM MECHANICAL ENGINEERING & CAD SERVICES (MECS) Pty Ltd		 THIRD ANGLE PROJECTION		 14 Waratah St TUMUT NSW 2720 Ph: - 02 6947 4039 Email: roddyeng.com.au		80NB SHED 40 PIPE 316 S/S	
 Mechanical Engineering & CAD Services 11 Campbell Place WAGGA NSW 2650 Ph: - 0409 985 816 Email: nick@mecservices.com.au		WEIGHT: 0.81 kg		DWG NO. 13-2931B-1-1		A4	
				DRAWN N DE BRUYN		DATE 19/09/2025 SCALE:1:5	
						SHEET 12	

ITEM	DRAWING No	DESCRIPTION	QTY.	MASS (kg)
1	OEM-80NB-300-SF-316L	80NB - 300lb SLIP ON FLANGE 316L S/S	2	6.08
2	13-2931A-2-1	80NB SHED 40 PIPE 316 S/S	1	57.47





PIPE LABEL - 13-2931A-2

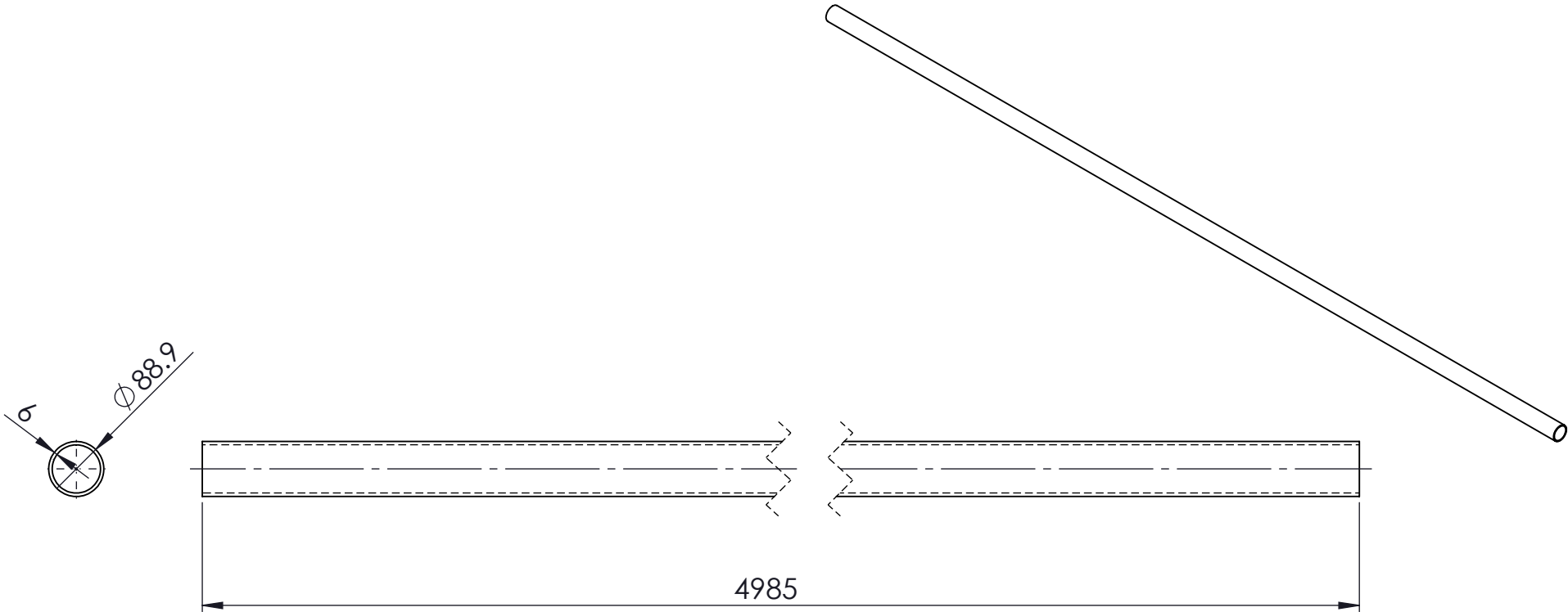
ISSUED FOR CONSTRUCTION 4/11/25

PIPEWORK MANUFACTURED OF A JIG - FLANGES AS PER DRAWING
DIMENSIONS ARE APPROXIMATE

UNIT 13 VALVE 2931A PIPE 2 WEIGHT - 69.63 kg

REV	NAME & DATE	DESCRIPTION	UNLESS OTHERWISE SPECIFIED: TOLERANCES: MACHINE + / - 0.25mm FABRICATION + / - 1.0 mm	DRAWN N DE BRUYN 19/09/2025	DRAWING CHECKED				
			THIS DRG SUPPLIED BY  14 Waratah St, TUMUT NSW 2720 Ph: 02 6947 4039	DESIGNED	DESIGN CHECKED	M2 POWER STATION UNIT 13 VALVE 2931A DOWN STREAM PIPE 2			
				SCALE 1:20 WORK ORDER No	APPROVED				
				DRAWING No. 13-2931A-2	REV:	SECTION No/KKS	A3 SHEET SIZE	SMA-DRG-NO	

ITEM NO.	DESCRIPTION	LENGTH	MATERIAL	MASS (kg)
1	89x5.5 CHS	4985	316L STAINLESS STEEL	57.47



MATERIAL:- 316L STAINLESS STEEL

80NB SHED 40 PIPE 316 S/S WEIGHT - 57.47 kg

UNLESS OTHERWISE SPECIFIED: TOLERANCES: MACHINE + / - 0.25mm FABRICATION + / - 1.0 mm

DIMENSIONS IN MILLIMETRES

THIS DRAWING IS THE PROPERTY OF MECHANICAL ENGINEERING & CAD SERVICES (MECS) Pty Ltd & MUST NOT BE MANUFACTURED FROM, COPIED OR TRANSMITTED TO A THIRD PARTY WITHOUT THE PRIOR APPROVAL FROM MECHANICAL ENGINEERING & CAD SERVICES (MECS) Pty Ltd

MECS
Mechanical Engineering & CAD Services
11 Campbell Place WAGGA NSW 2650
Ph: - 0409 985 816
Email: nick@mecservices.com.au

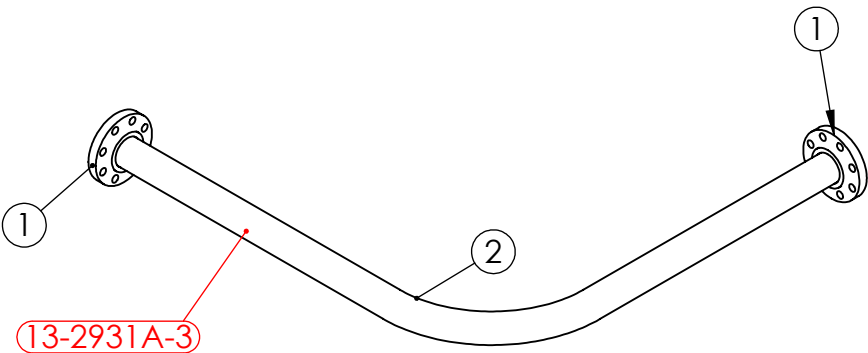
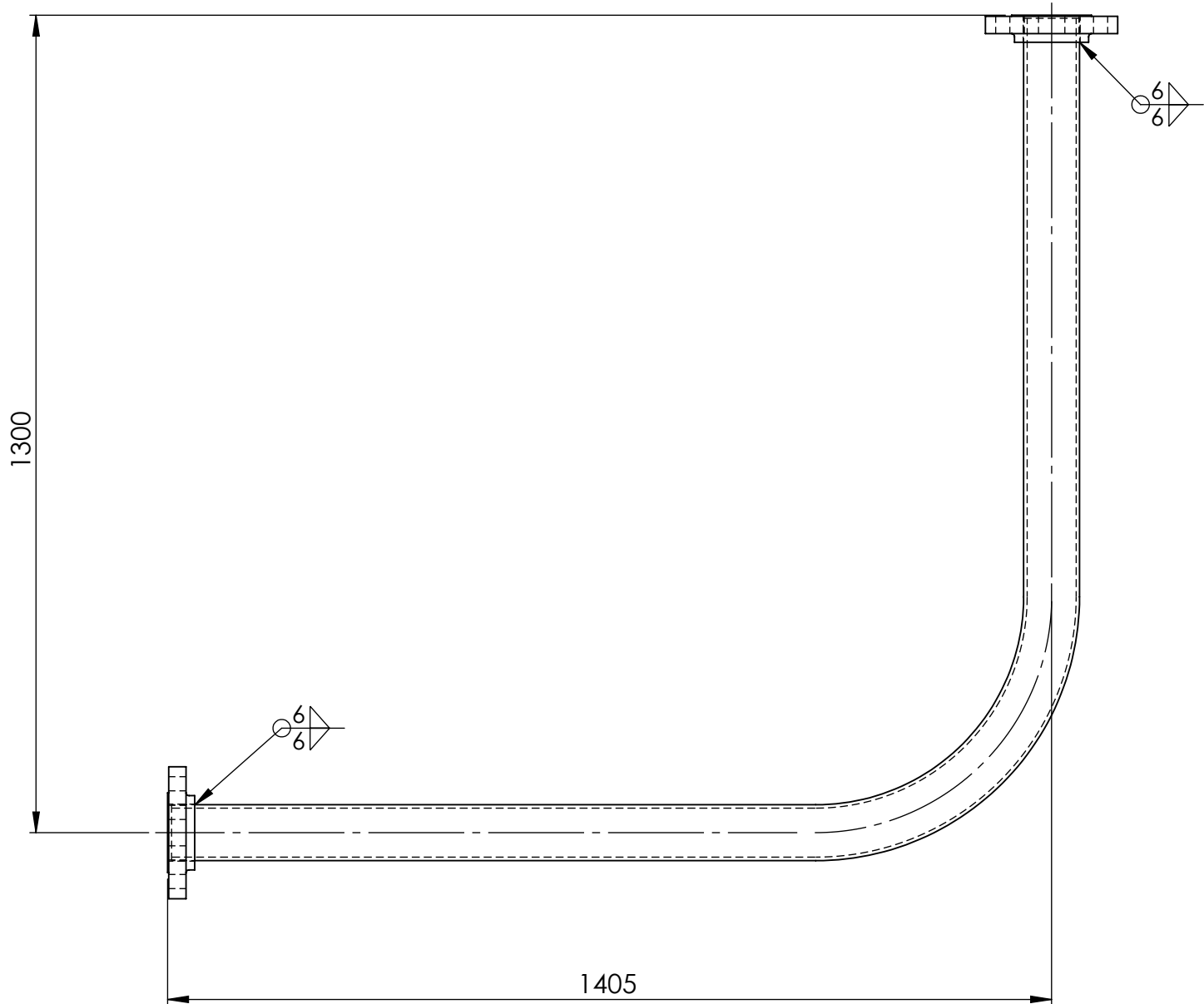
THIRD ANGLE PROJECTION
WEIGHT: 57.47 kg

CLIENT
RODDY ENGINEERING
14 Waratah St TUMUT NSW 2720
Ph: - 02 6947 4039
Email: roddyeng.com.au

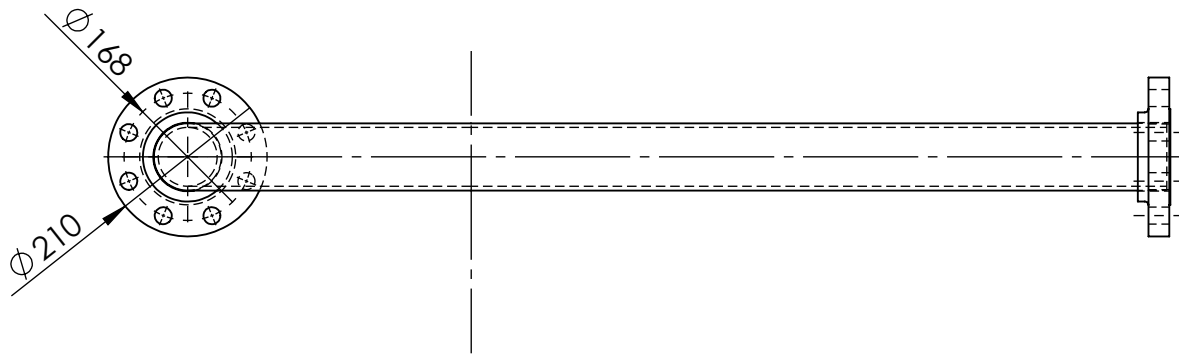
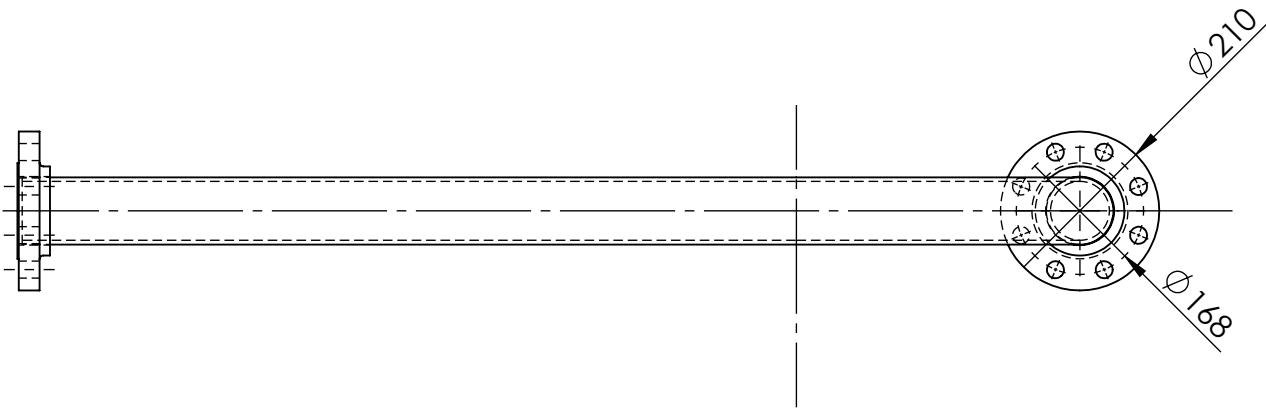
TITLE: 80NB SHED 40 PIPE 316 S/S	
DWG NO. 13-2931A-2-1	A4
DRAWN N DE BRUYN	DATE 19/09/2025 SCALE:1:10 SHEET 14

ITEM	DRAWING No	DESCRIPTION	QTY.	MASS (kg)
1	OEM-80NB-300-SF-316L	80NB - 300lb SLIP ON FLANGE 316L S/S	2	6.08
2	J003435-55A	80NB SHED 40 PIPE x 90 DEGREE BEND 375R	1	69.17

RED EYE
QR CODE
AREA





PIPE LABEL - 13-2931A-3



ISSUED FOR CONSTRUCTION 4/11/25

PIPEWORK MANUFACTURED OF A JIG - FLANGES AS PER DRAWING
DIMENSIONS ARE APPROXIMATE

UNIT 13 VALVE 2931A PIPE 3 WEIGHT - 41.36 kg

			UNLESS OTHERWISE SPECIFIED: TOLERANCES: MACHINE + / - 0.25mm FABRICATION + / - 1.0 mm	DRAWN N DE BRUYN 19/09/2025	DRAWING CHECKED					
			THIS DRG SUPPLIED BY  14 Waratah St, TUMUT NSW 2720 Ph: 02 6947 4039	DESIGNED	DESIGN CHECKED	M2 POWER STATION UNIT 13 VALVE 2931 DOWN STREAM PIPE # 3				
				SCALE 1:10 WORK ORDER No	APPROVED					
REV	NAME & DATE	DESCRIPTION	DRAWING No. 13-2931A-3	REV:	SECTION No/KKS	A2 SHEET SIZE	SMA-DRG-NO		REV	SHEET 1 OF 1