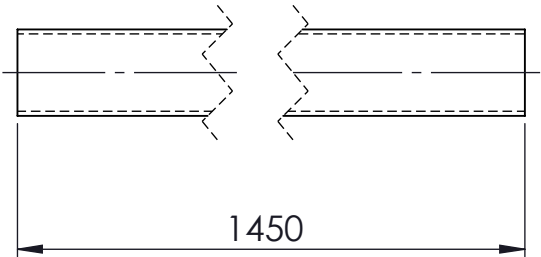
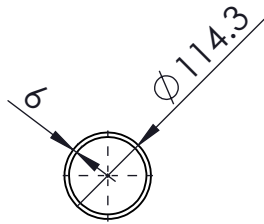
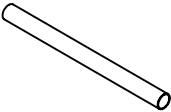
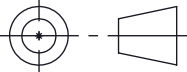



ITEM NO.	DESCRIPTION	LENGTH	MATERIAL	MASS (kg)
1	114x6.0 CHS	1450	316L STAINLESS STEEL	23.68



MATERIAL:- 316L STAINLESS STEEL

100NB SHED 40 PIPE 316 S/S WEIGHT - 23.68 kg

UNLESS OTHERWISE SPECIFIED: TOLERANCES: MACHINE + / - 0.25mm FABRICATION + / - 1.0 mm		DIMENSIONS IN MILLIMETRES	CLIENT	TITLE:	
THIS DRAWING IS THE PROPERTY OF MECHANICAL ENGINEERING & CAD SERVICES (MECS) Pty Ltd & MUST NOT BE MANUFACTURED FROM,COPIED OR TRANSMITTED TO A THIRD PARTY WITHOUT THE PRIOR APPROVAL FROM MECHANICAL ENGINEERING & CAD SERVICES (MECS) Pty Ltd		 THIRD ANGLE PROJECTION	 14 Waratah St TUMUT NSW 2720 Ph: - 02 6947 4039 Email: roddyeng.com.au	100NB SHED 40 PIPE 316 S/S	
				DWG NO.	A4
				13-2919-3-2	
MECS Mechanical Engineering & CAD Services 11 Campbell Place WAGGA NSW 2650 Ph: - 0409 985 816 Email: nick@mecservices.com.au		WEIGHT: 23.68 kg	DRAWN N DE BRUYN DATE 19/09/2025 SCALE:1:10 SHEET 1 OF 1		