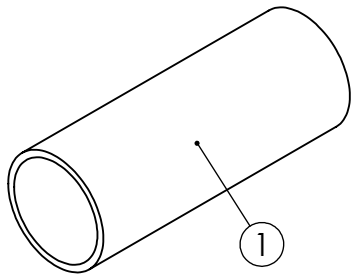
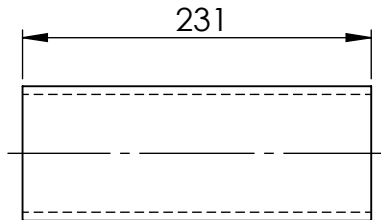
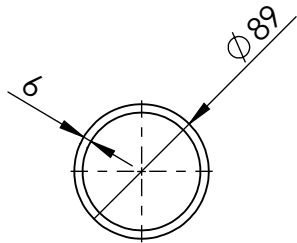


ITEM NO.	DESCRIPTION	LENGTH	MATERIAL	MASS (kg)
1	88.90x5.5 CHS	230.5	316L STAINLESS STEEL	2.66



80NB SHED 40 PIPE 316L S/S WEIGHT - 2.66 kg

UNLESS OTHERWISE SPECIFIED: TOLERANCES: MACHINE + / - 0.25mm FABRICATION + / - 1.0 mm

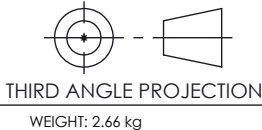
DIMENSIONS IN  
MILLIMETRES

CLIENT

TITLE:

THIS DRAWING IS THE PROPERTY OF MECHANICAL  
ENGINEERING & CAD SERVICES (MECS) Pty Ltd & MUST NOT  
BE MANUFACTURED FROM, COPIED OR TRANSMITTED TO A  
THIRD PARTY WITHOUT THE PRIOR APPROVAL FROM  
MECHANICAL ENGINEERING & CAD SERVICES (MECS) Pty Ltd

**MECS**  
**Mechanical Engineering & CAD Services**  
11 Campbell Place WAGGA NSW 2650  
Ph: - 0409 985 816  
Email: nick@mecservices.com.au



**RODDY**  
**ENGINEERING**  
14 Waratah St TUMUT NSW 2720  
Ph: - 02 6947 4039  
Email: roddyeng.com.au

80NB SHED 40 PIPE 316L S/S

DWG NO. 13-2931A-1-1

A4

DRAWN N DE BRUYN DATE 19/09/2025 SCALE: 1:5 SHEET 1 OF 1