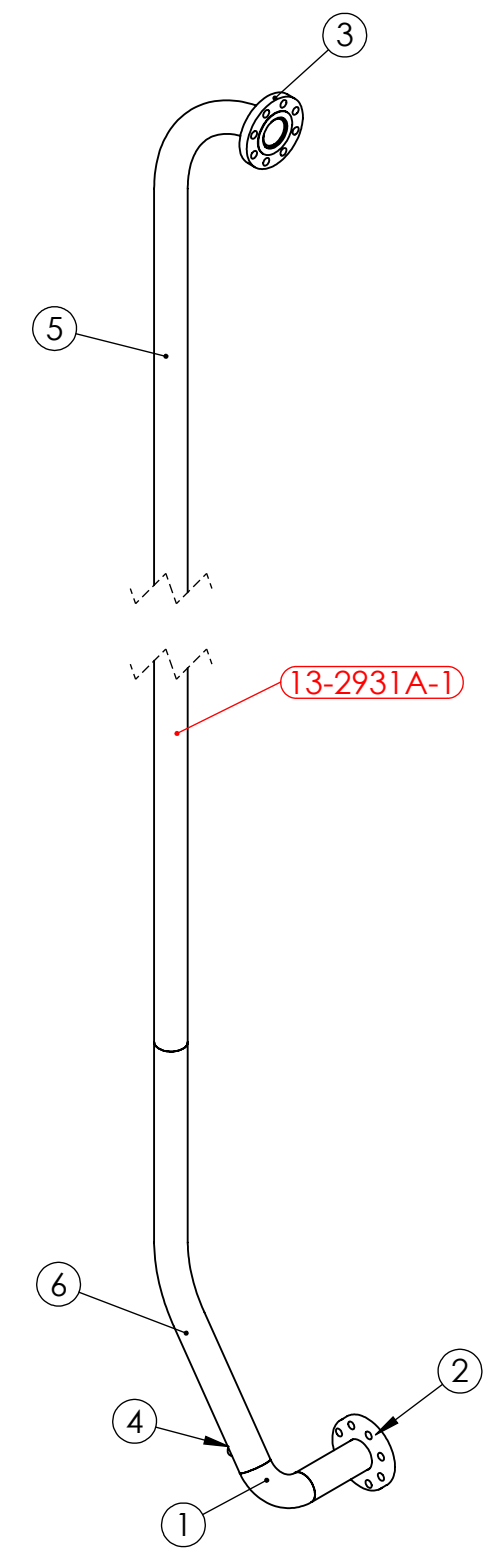
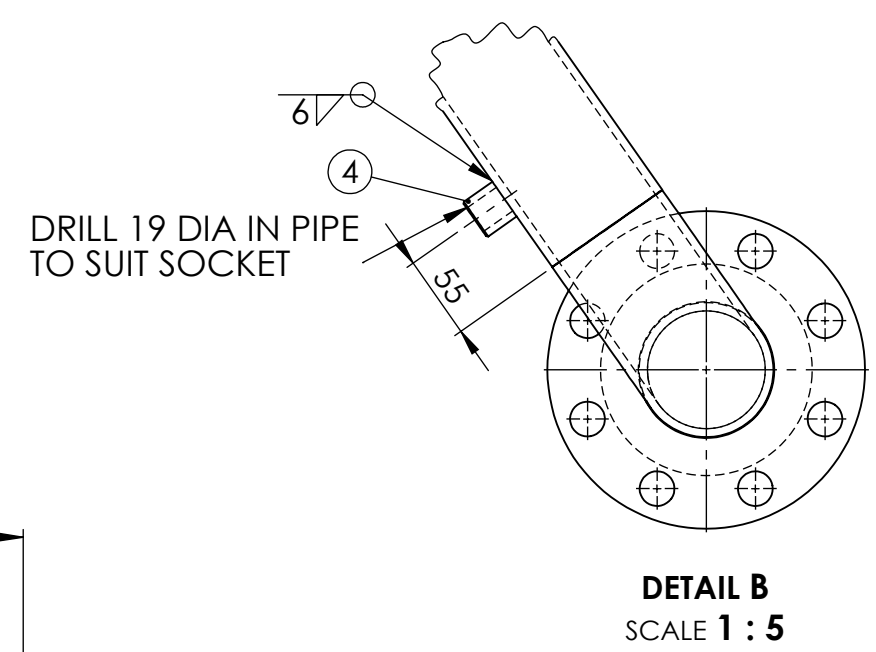
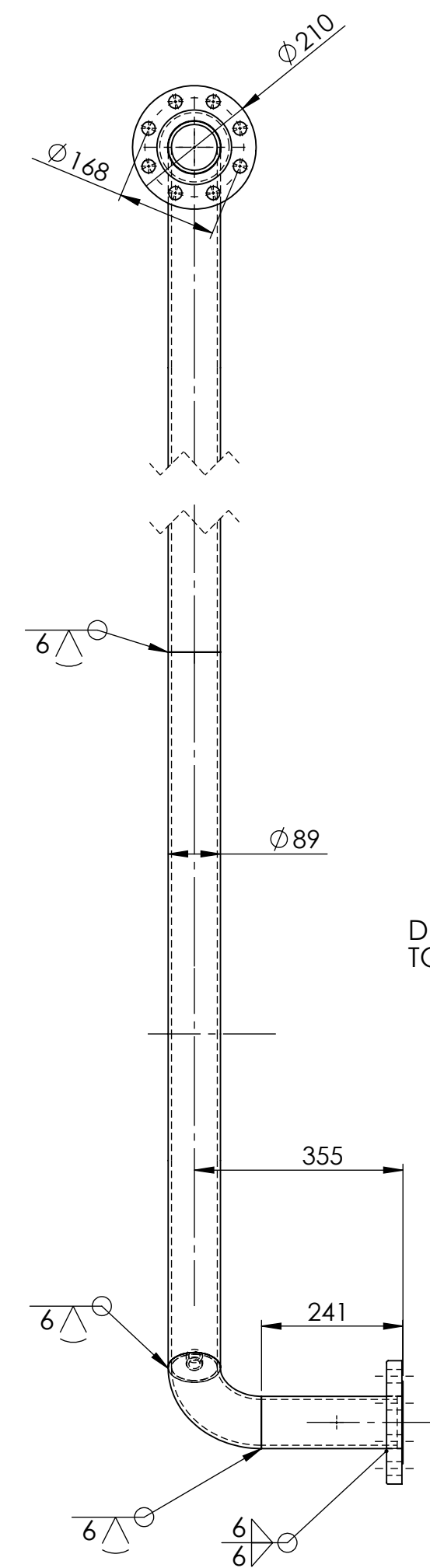
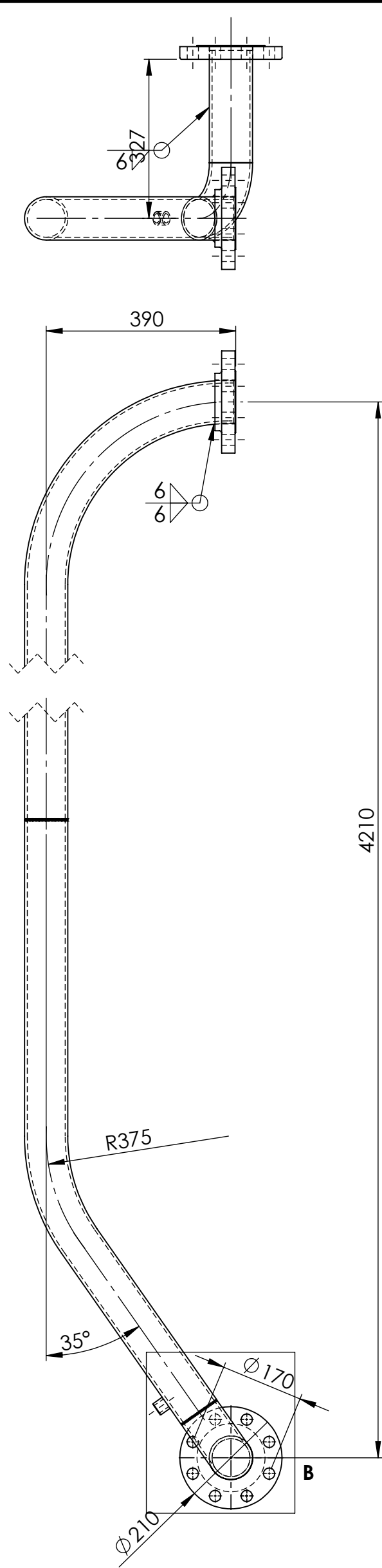


ITEM	DRAWING No	DESCRIPTION	QTY.	MASS (kg)
1	OEM-80-LR-40-316L	80NB LONG RADIUS BEND SHED 40 316L S/S	1	2.06
2	OEM-80NB-JIS30K-P-316L	80NB PLATE FLANGE JIS 30 K 316L S/S	1	5.32
3	OEM-80NB-300-SF-316L	80NB - 300lb SLIP ON FLANGE 316L S/S	1	6.08
4	OEM-1_2-BSPP-3000-316L	1/2 BSPP 3000 Lb HALF COUPLING 316L S/S	1	0.06
5	J003435-69	80NB SHED 40 PIPE x 90 DEGREE BEND 400R	1	43.36
6	J003435-56	80NB SHED 40 PIPE x 145 DEGREE BEND 375R	1	17.63
7	13-2931A-1-1	80NB SHED 40 PIPE 316L S/S	1	2.66

RED EYE  
QR CODE  
AREA



PIPE LABEL - 13-2931A-1

ISSUED FOR CONSTRUCTION 4/11/25

PIPEWORK MANUFACTURED OF A JIG - FLANGES AS PER DRAWING  
DIMENSIONS ARE APPROXIMATE

UNIT 13 VALVE 2931A PIPE 1 WEIGHT - 67.28 kg

			UNLESS OTHERWISE SPECIFIED: TOLERANCES: MACHINE + / - 0.25mm FABRICATION + / - 1.0 mm		DRAWN N DE BRUYN 19/09/2025	DRAWING CHECKED	<div><div>snowyhydro</div><div>LIMITED</div></div>		
			THIS DRG SUPPLIED BY <div><div></div><div>RODDY</div><div>ENGINEERING</div></div> <div>14 Waratah St, TUMUT NSW 2720 Ph: 02 6947 4039</div>		DESIGNED	DESIGN CHECKED	M2 POWER STATION UNIT 13 VALVE 2931A DOWN STREAM PIPE 1		
			DRAWING No. REV: 13-2931A-1		SCALE 1:10 WORK ORDER No	APPROVED			
					SECTION No/KKS	A2 SHEET SIZE	SMA-DRG-NO		
REV	NAME & DATE	DESCRIPTION							