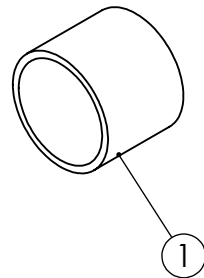
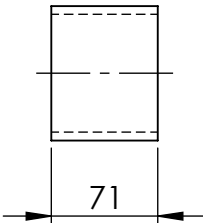
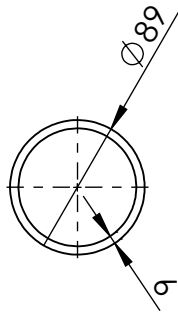


ITEM NO.	DESCRIPTION	LENGTH	MATERIAL	MASS (kg)
1	88.90x5.5 CHS	70.5	316L STAINLESS STEEL	0.81



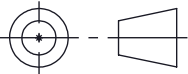
80NB SHED 40 PIPE 316 S/S WEIGHT - 0.81 kg

UNLESS OTHERWISE SPECIFIED: TOLERANCES: MACHINE + / - 0.25mm FABRICATION + / - 1.0 mm

DIMENSIONS IN
MILLIMETRES

THIS DRAWING IS THE PROPERTY OF MECHANICAL
ENGINEERING & CAD SERVICES (MECS) Pty Ltd & MUST NOT
BE MANUFACTURED FROM, COPIED OR TRANSMITTED TO A
THIRD PARTY WITHOUT THE PRIOR APPROVAL FROM
MECHANICAL ENGINEERING & CAD SERVICES (MECS) Pty Ltd

MECS
Mechanical Engineering & CAD Services
11 Campbell Place WAGGA NSW 2650
Ph: - 0409 985 816
Email: nick@mecs-services.com.au



THIRD ANGLE PROJECTION

WEIGHT: 0.81 kg

CLIENT

RODDY
ENGINEERING

14 Waratah St TUMUT NSW 2720
Ph: - 02 6947 4039
Email: roddyeng.com.au

TITLE:

80NB SHED 40 PIPE 316 S/S

DWG NO. 13-2931B-1-1

A4

DRAWN N DE BRUYN DATE 19/09/2025 SCALE:1:5 SHEET 1 OF 1